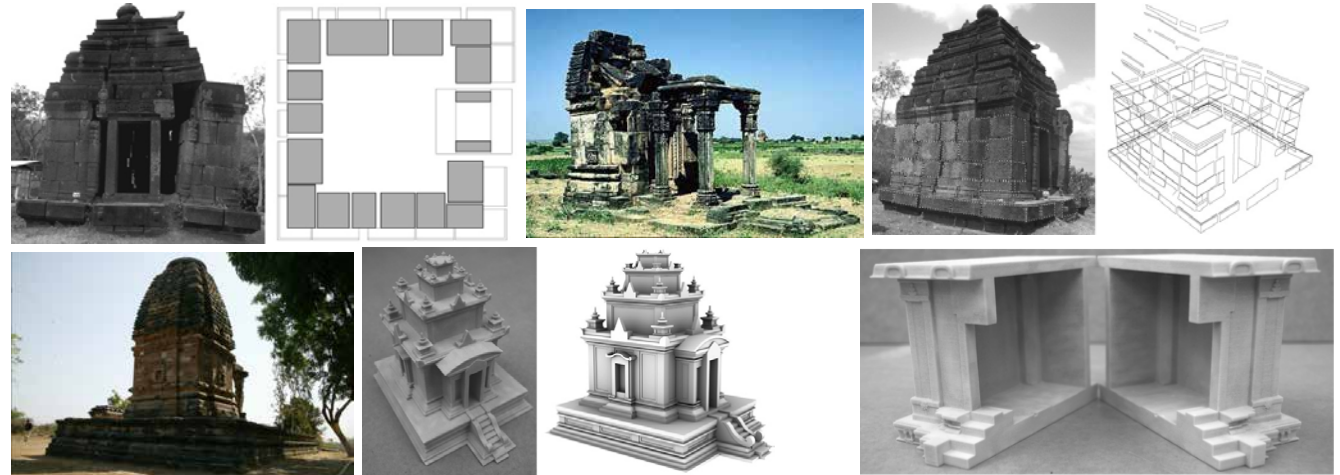


11 December, 2019

NDLI-UNESCO International Symposium on Knowledge Engineering for Digital Library Design,
IIT Delhi



The architectural evolution of Indic temples across Southeast Asia

SAMBIT DATTA

Architecture and Urban Science Laboratory

DiplArch (Cept), MArch (Nus), PhD (Adel)

Dean International | Faculty of Science and Engineering

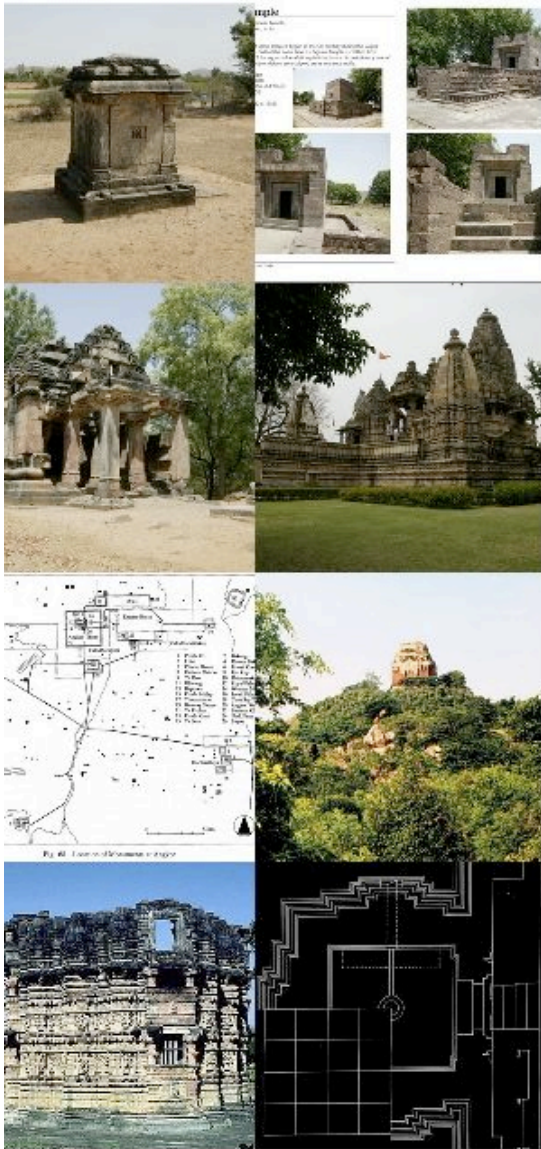


Curtin University



The architectural evolution of Indic temples
across Southeast Asia 400 – 1500 CE





Motivation

understand the spatio temporal spread

- corpus, variations on a theme
- temple typology and morphology
- 400 -1100 CE

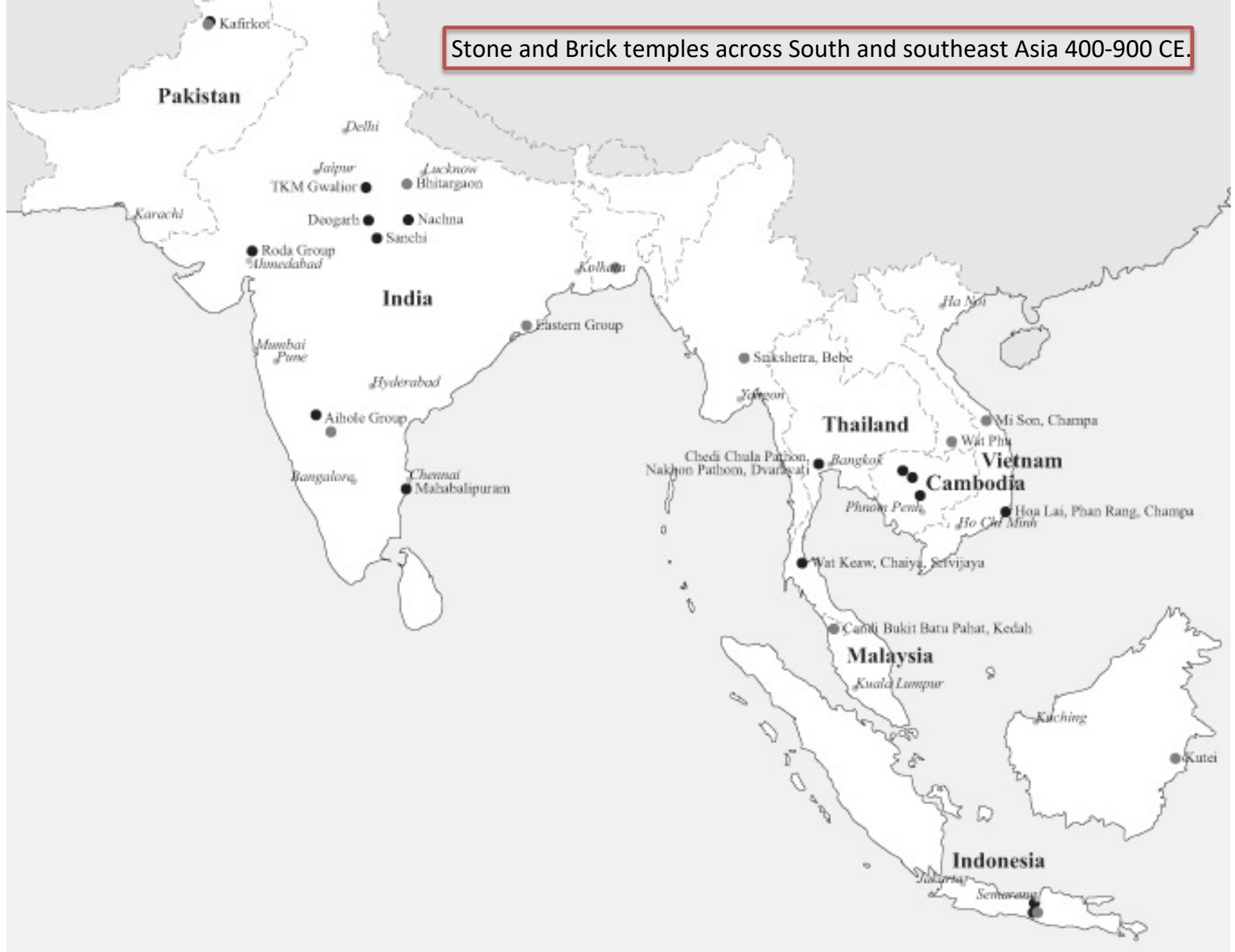
digital reconstructions

- fill in the missing information
- constructive geometry
- part-whole relationships
- fragments
- keep up with emerging technologies

socio economic role

- heritage as “cultural capital”
- living communities
- environmental knowledge (water, land, place)

Stone and Brick temples across South and southeast Asia 400-900 CE.



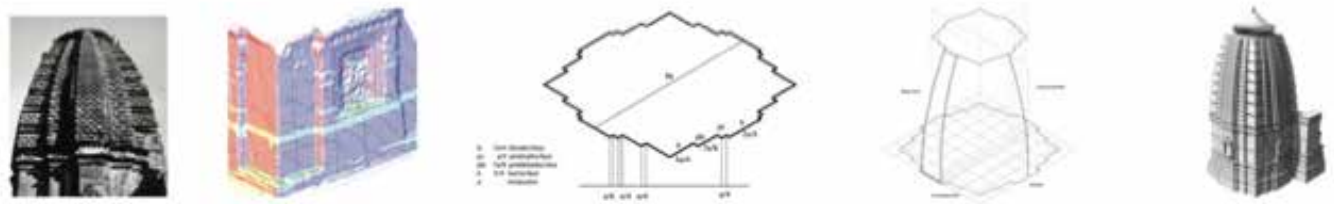
datasets of related building corpus at multiple spatial scales and multiple modes of representation.



TOPICS

Digital Reconstructions

the selection, preservation, collection and archiving of digital datasets.



Immersive Stereoscopic Environments

visualisation, simulation, communication and sharing of digital datasets.

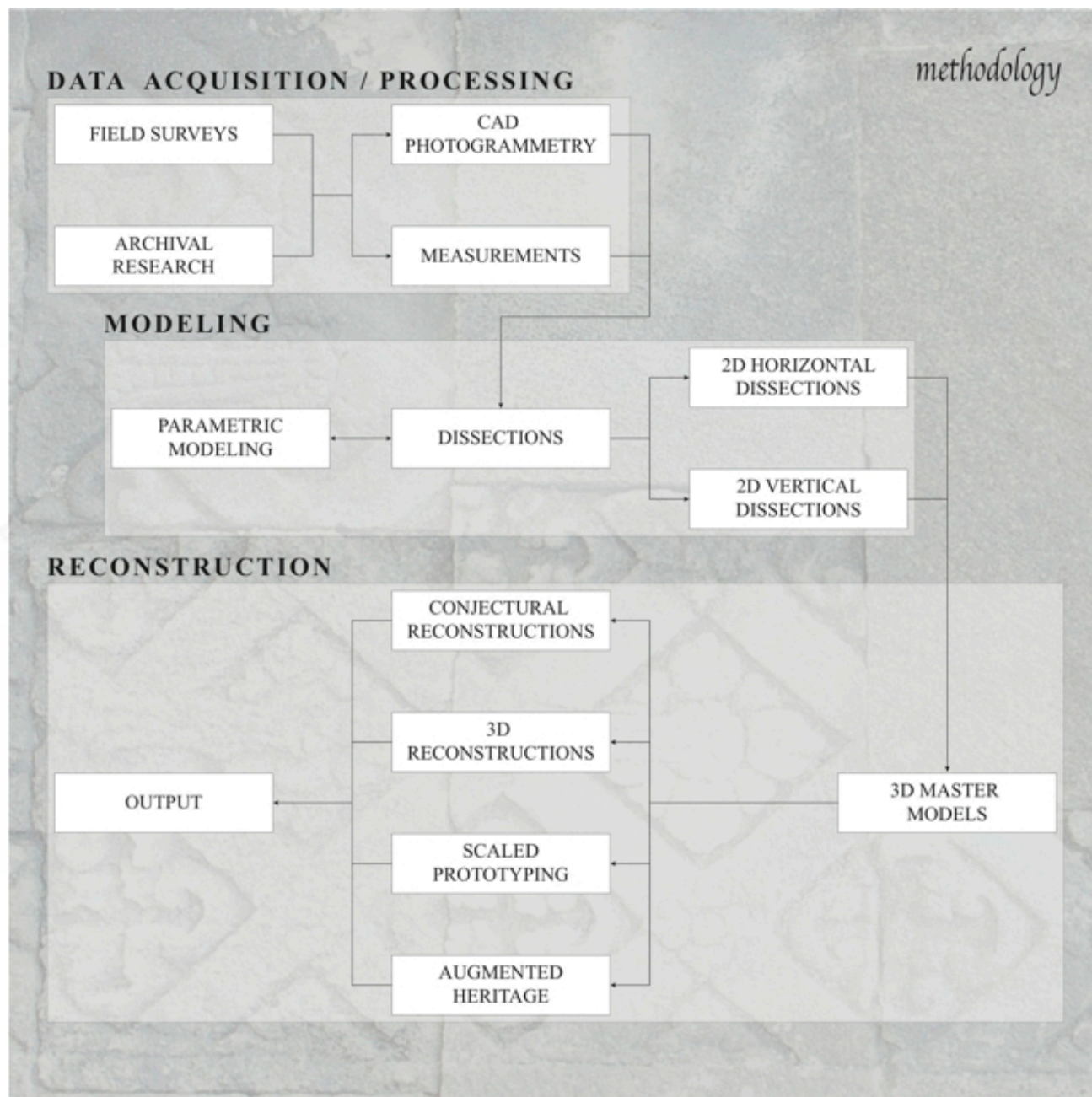
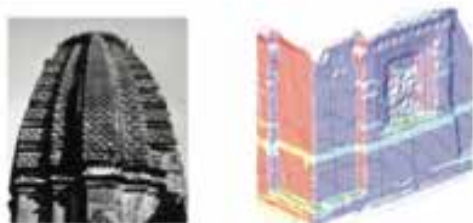


Physical Prototyping

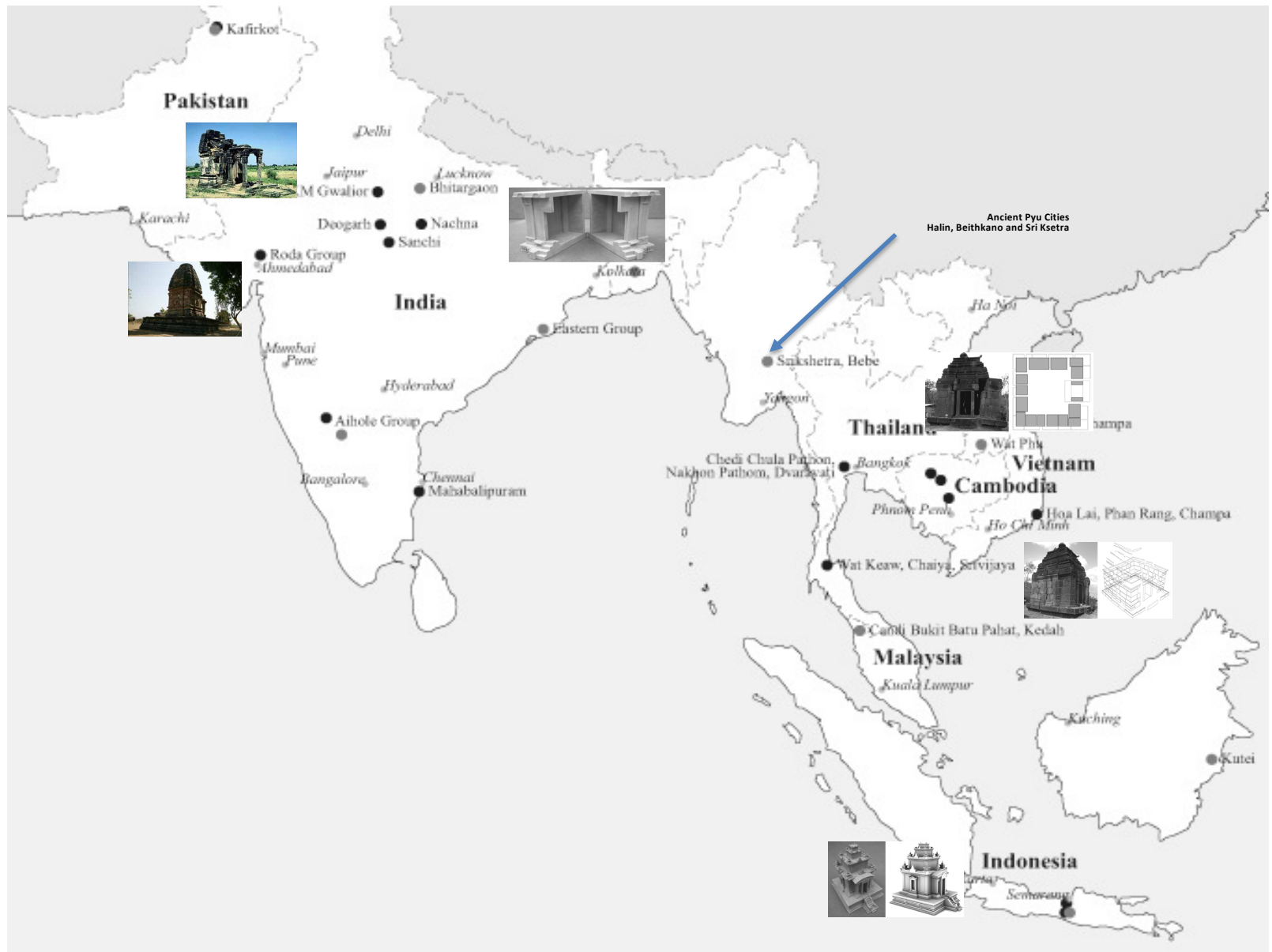
Scaled prototypes from digital data

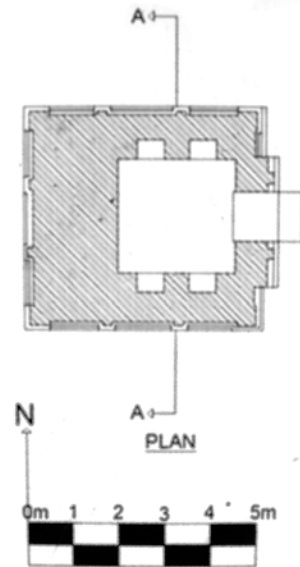


DIGITAL RECONSTRUCTION

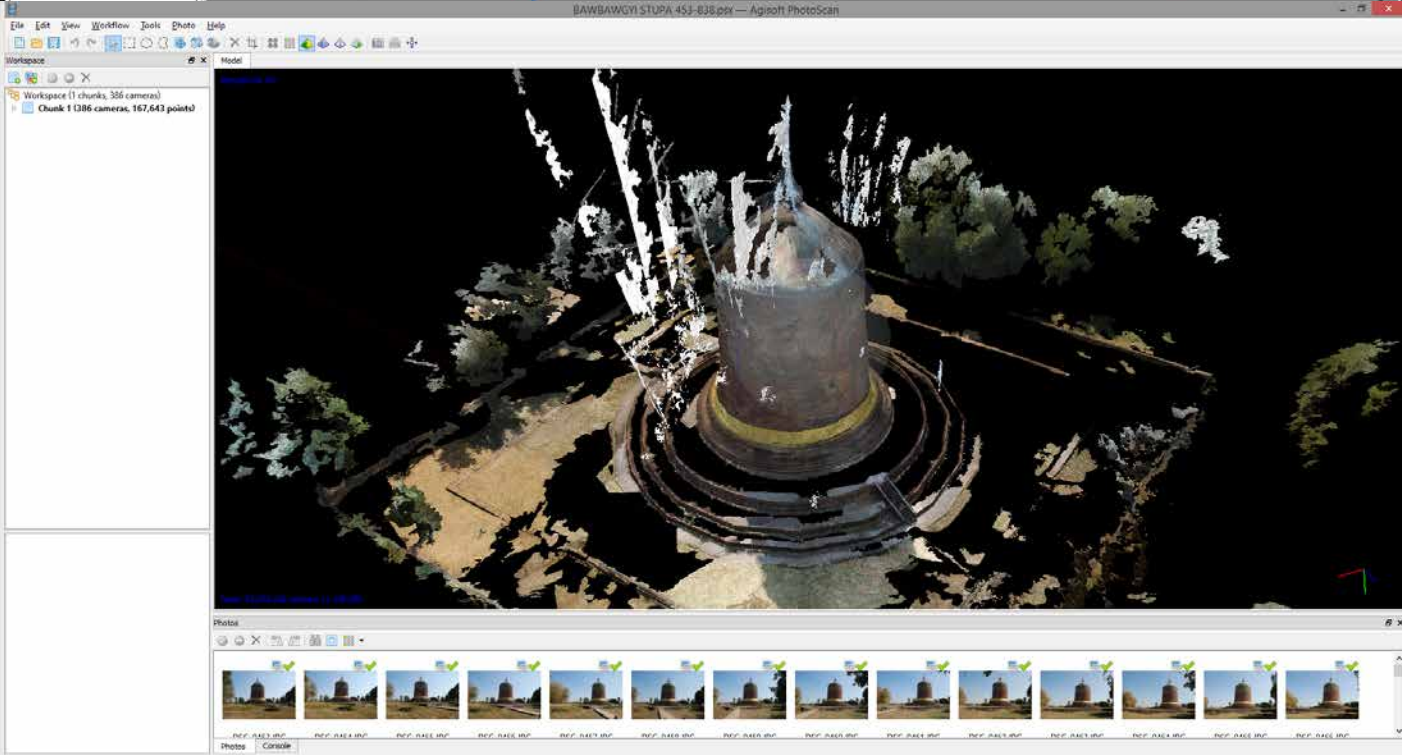
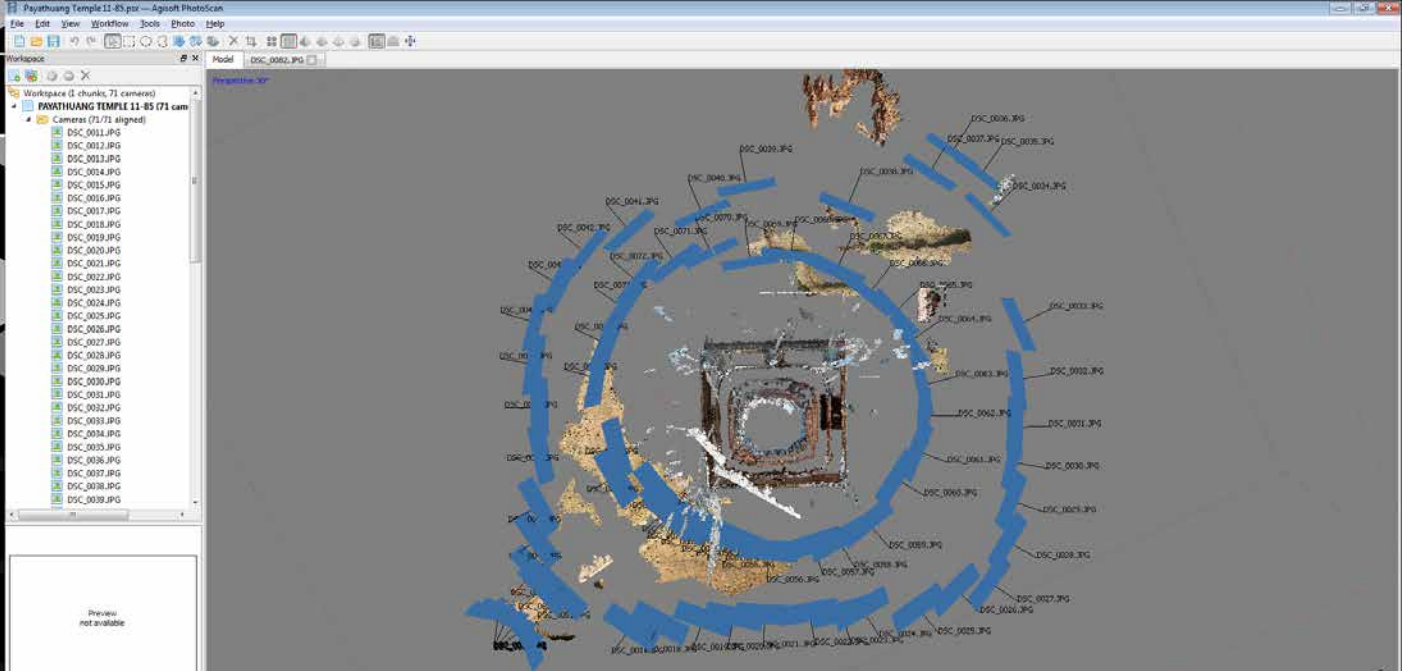


Indic temples across South and southeast Asia 400-900 CE.





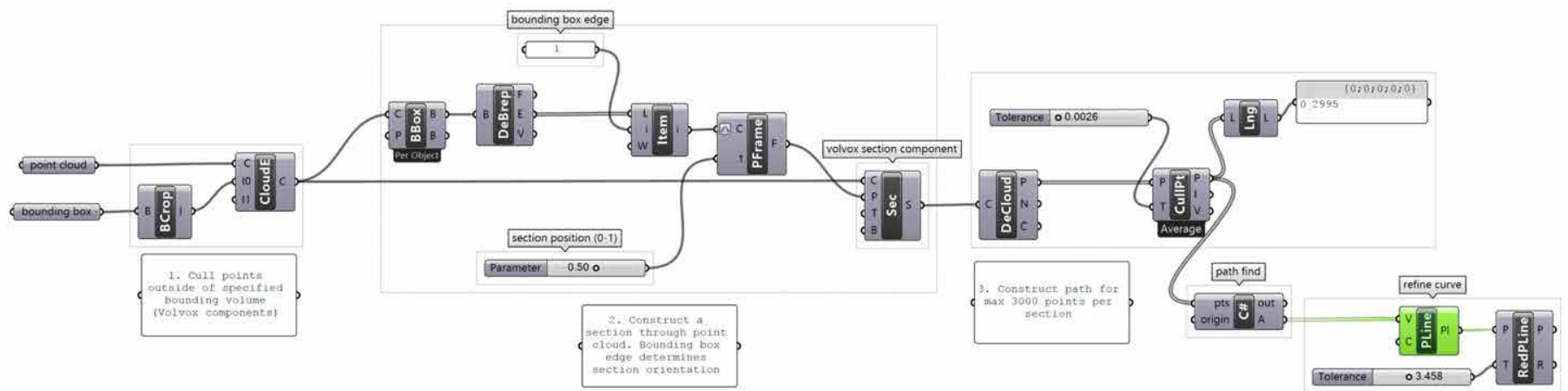
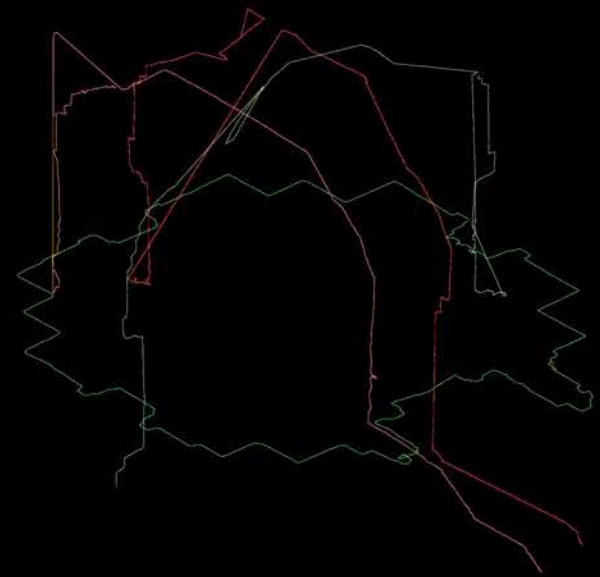
1.1 Creation of solids from point clouds

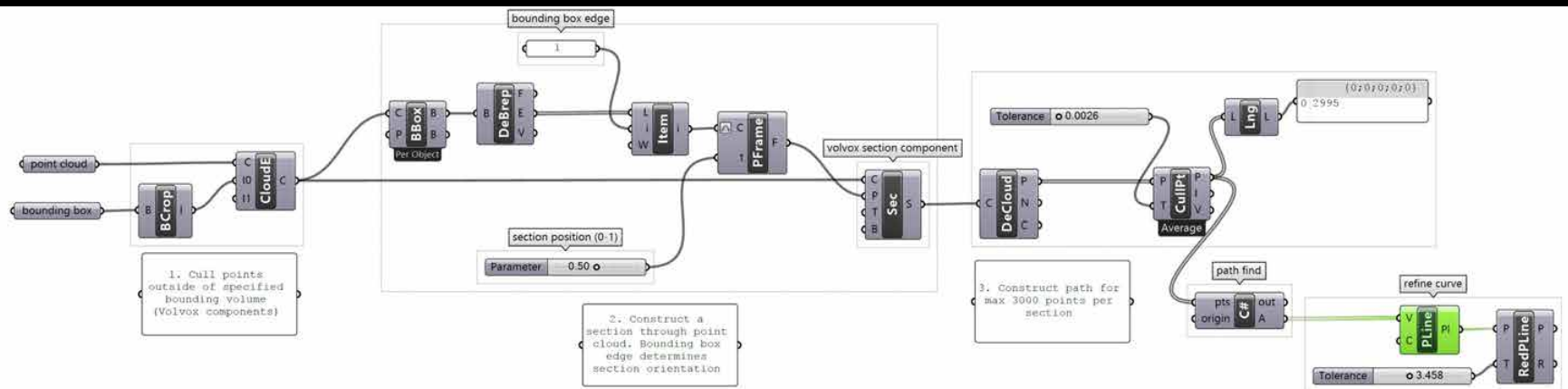
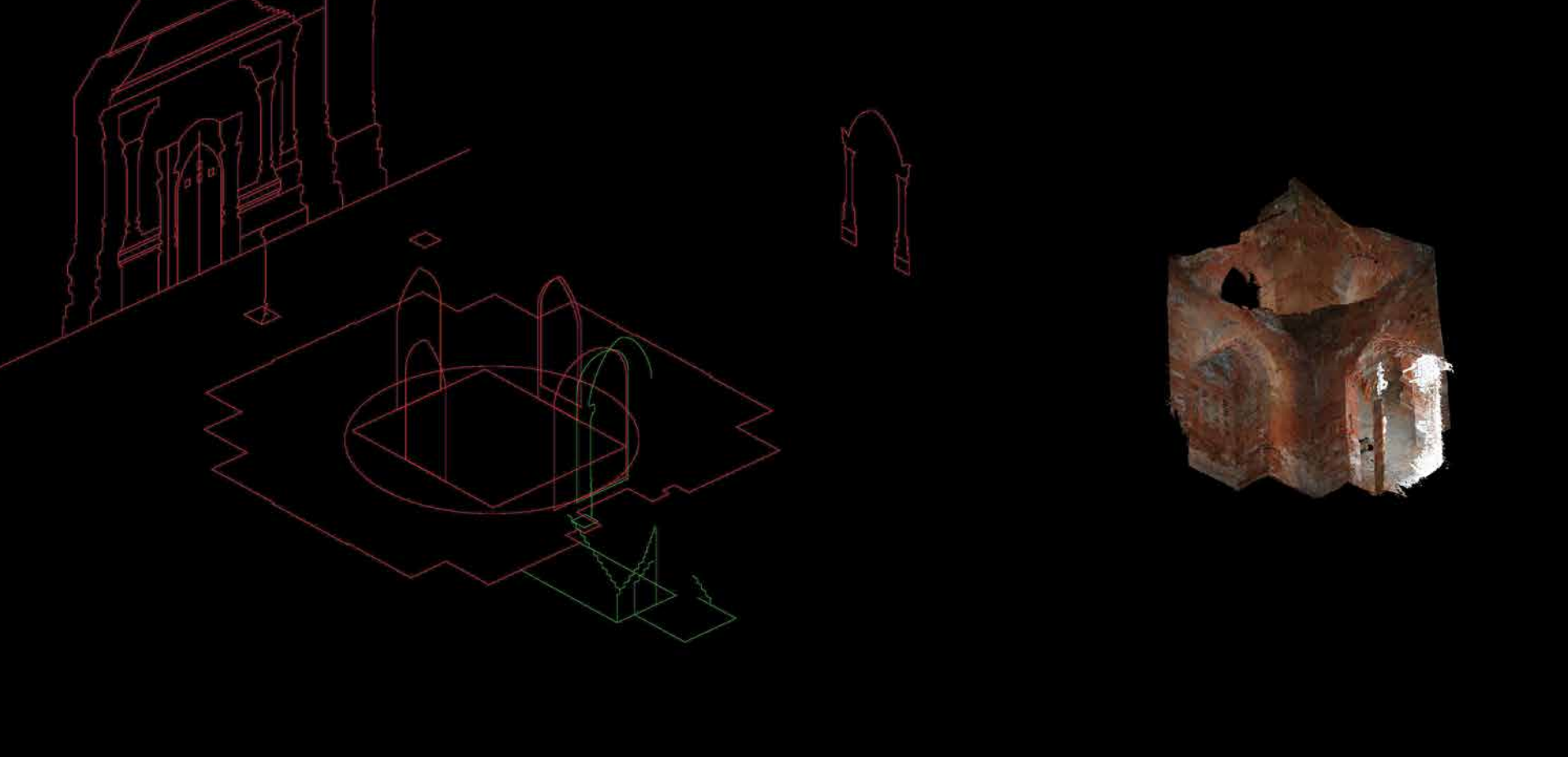


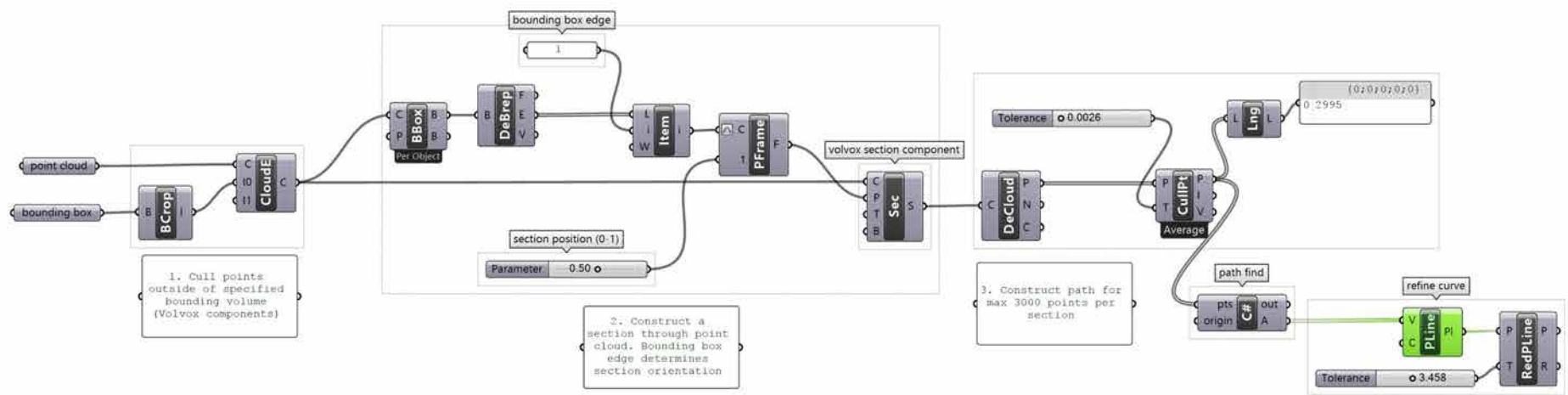
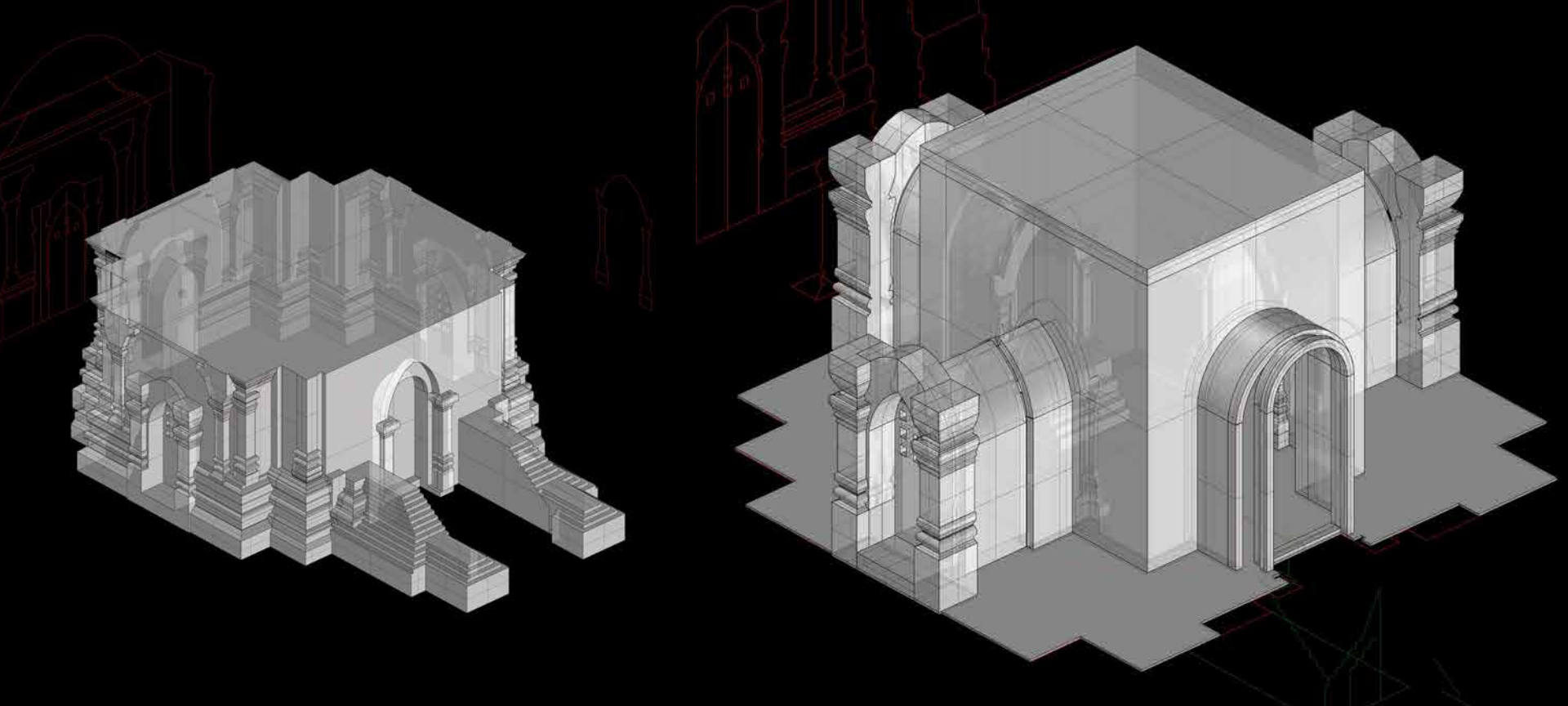


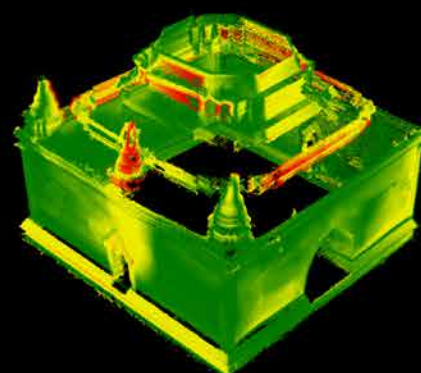
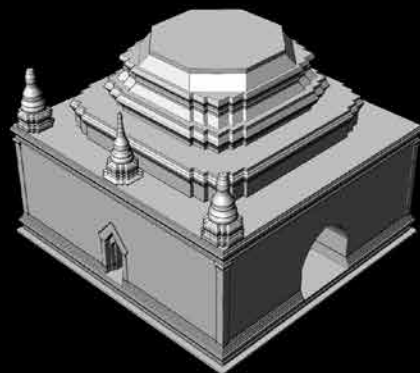
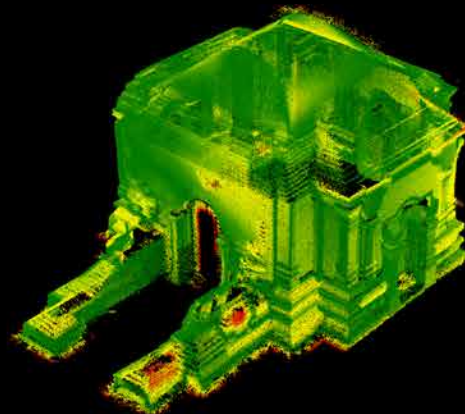
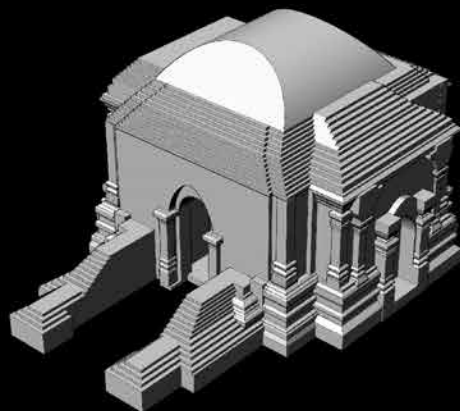
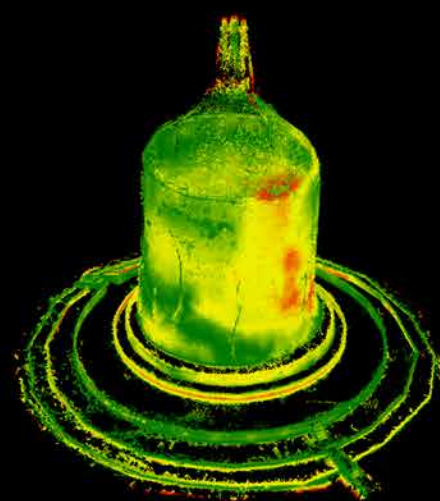
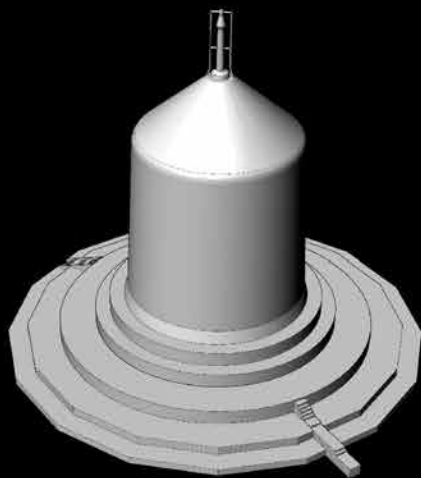
Paya Thuang Temple Sri Ksetra



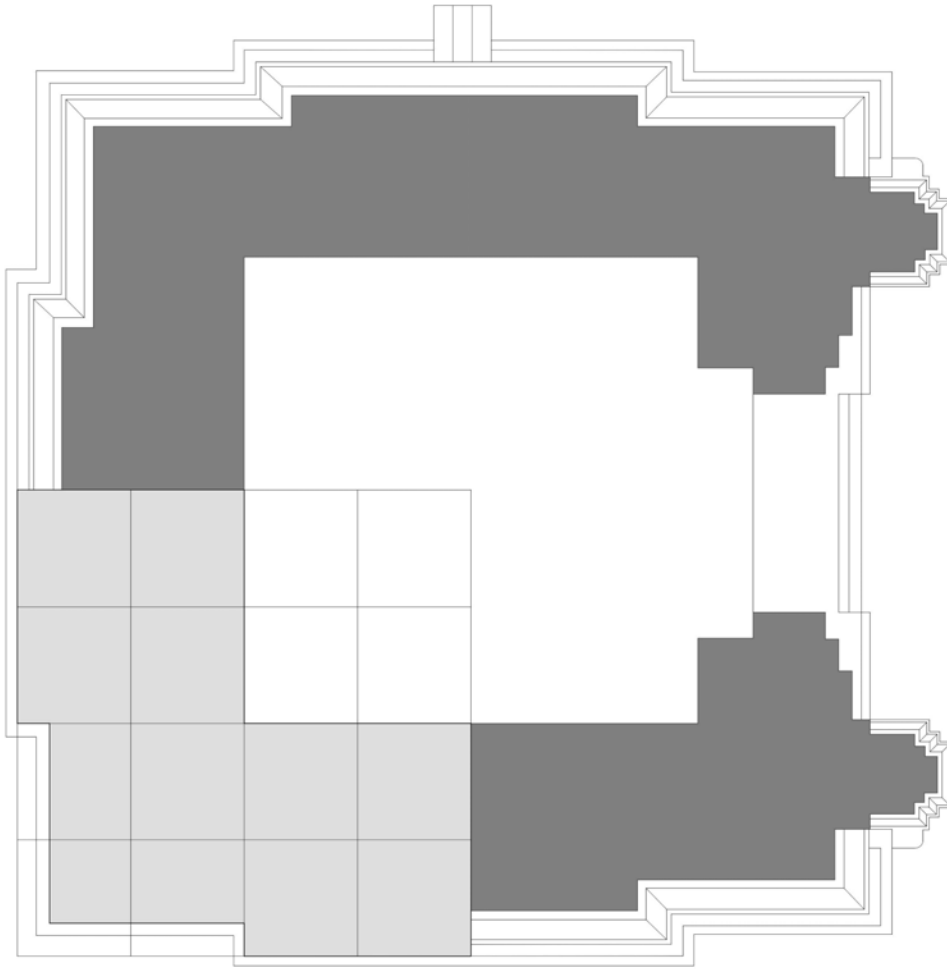








CANON AND TEMPLE CONSTRUCTIVE GEOMETRY

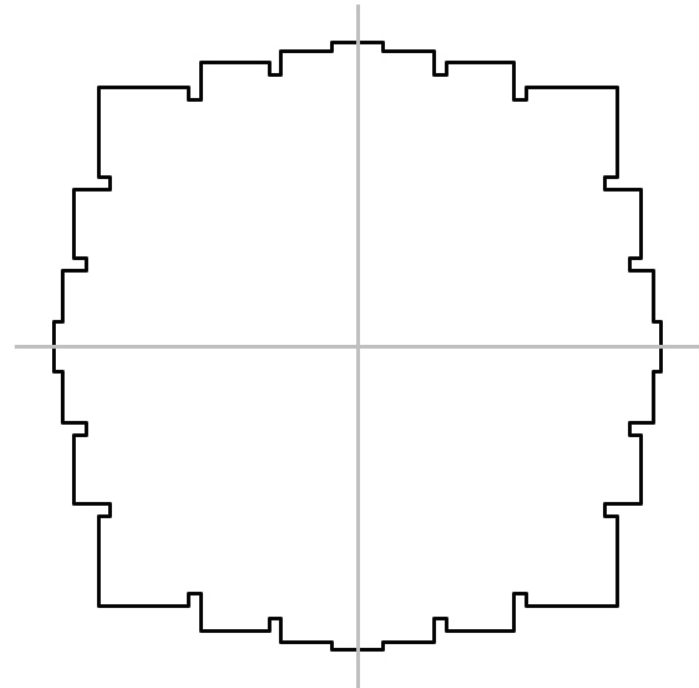
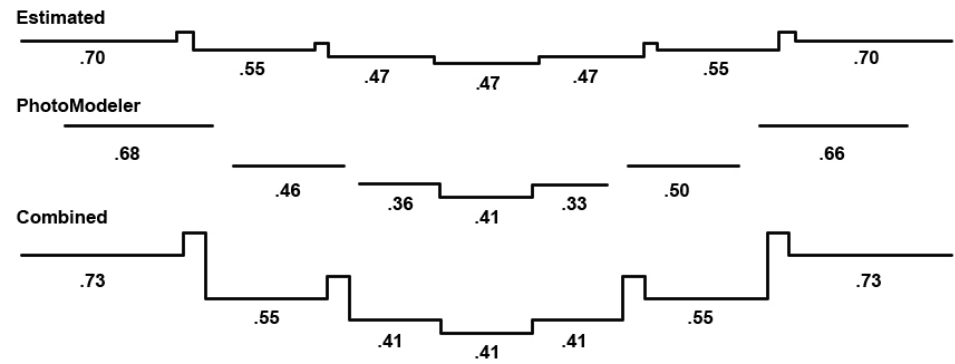
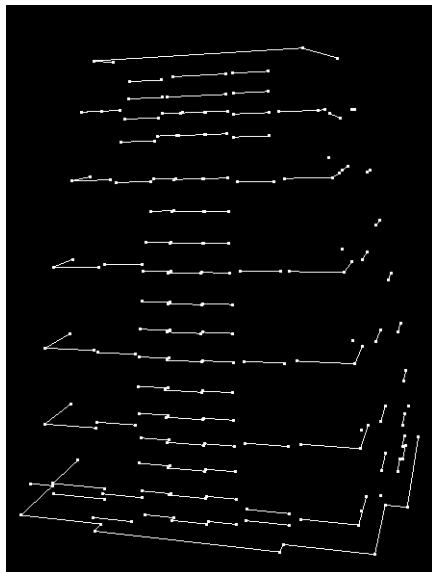
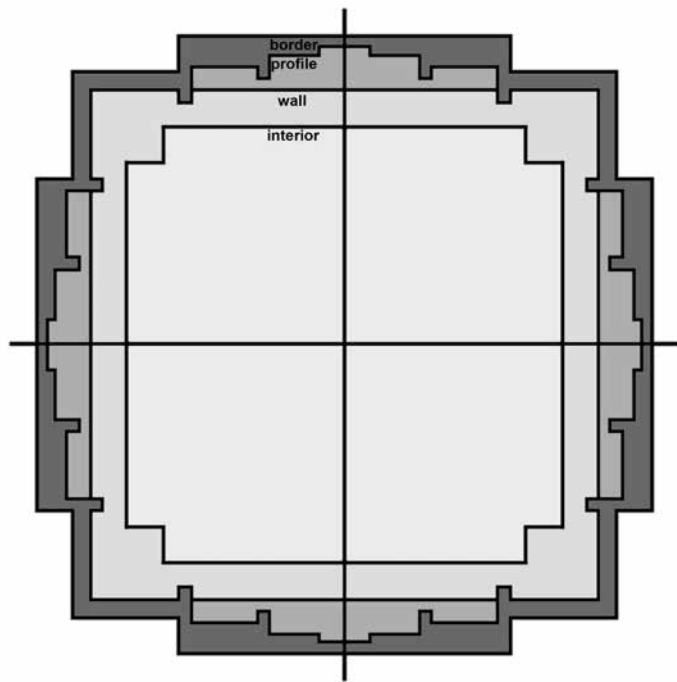


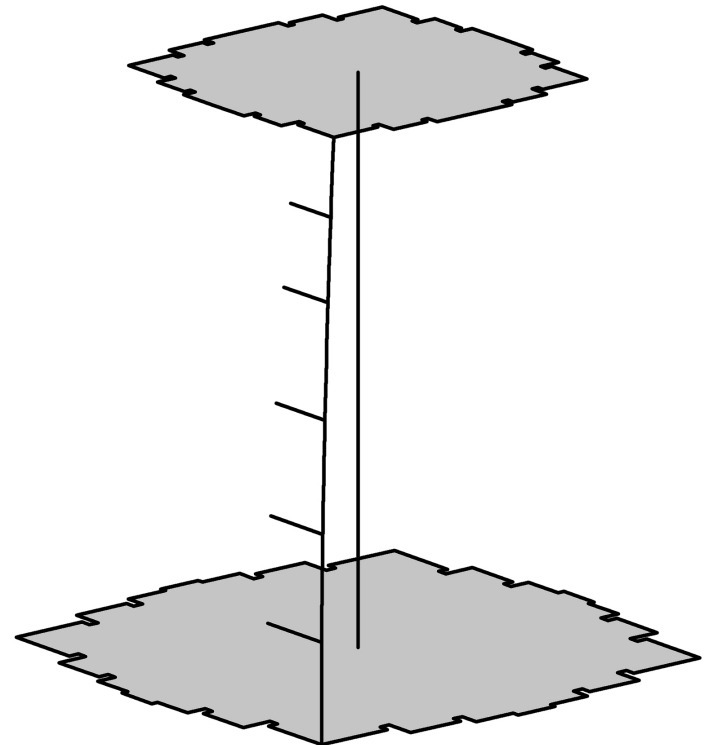
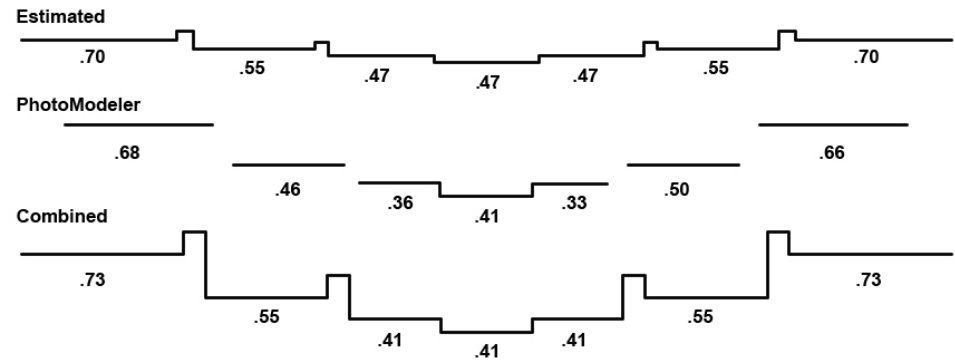
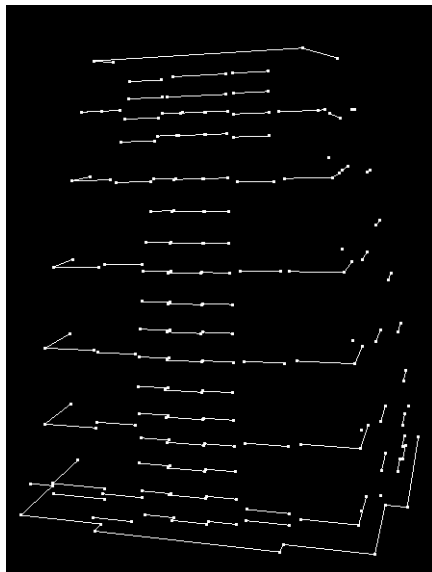
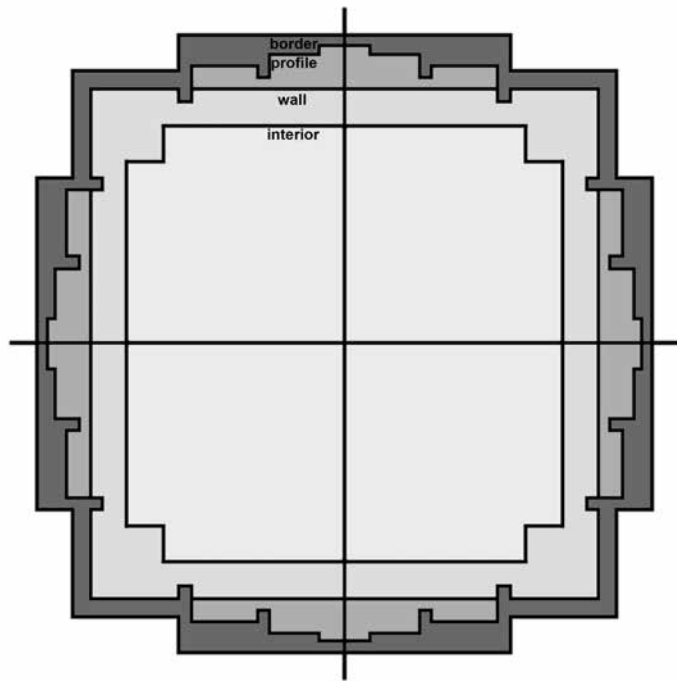
Brihat Samhita 6th century AD
Vastupurushamandala

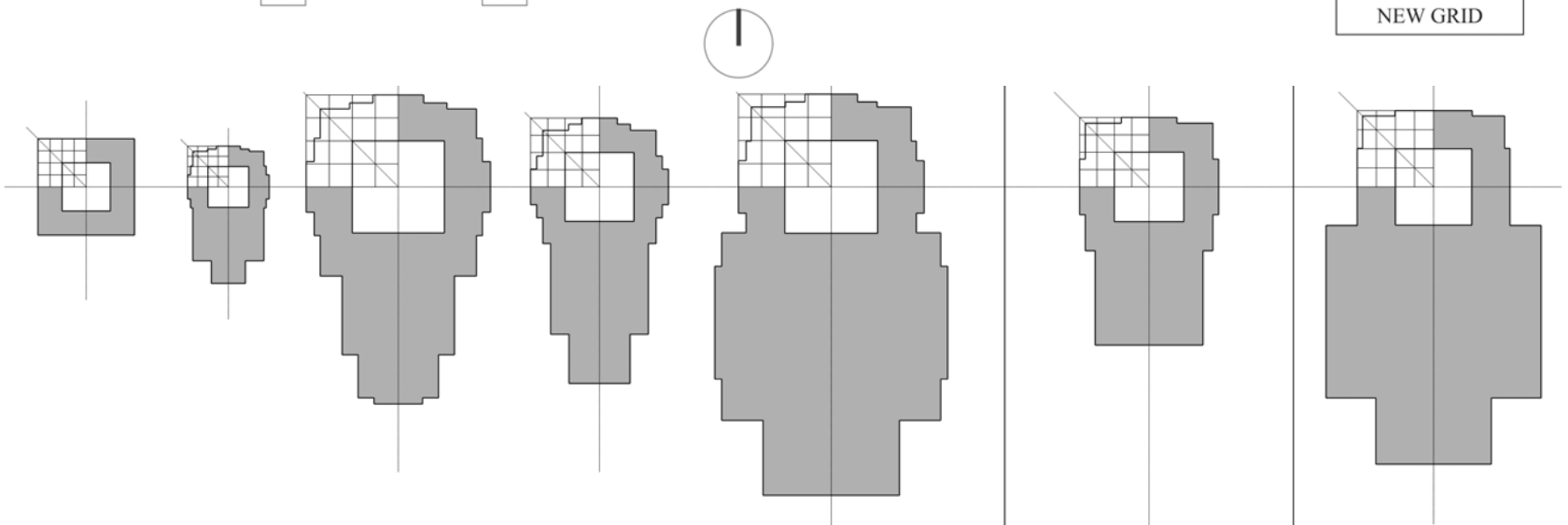
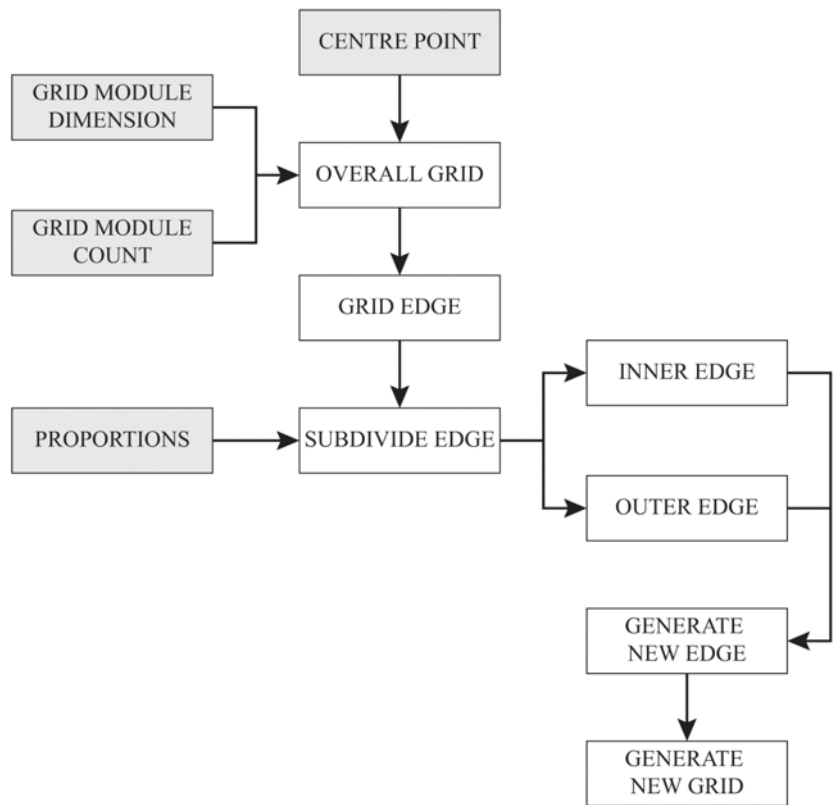
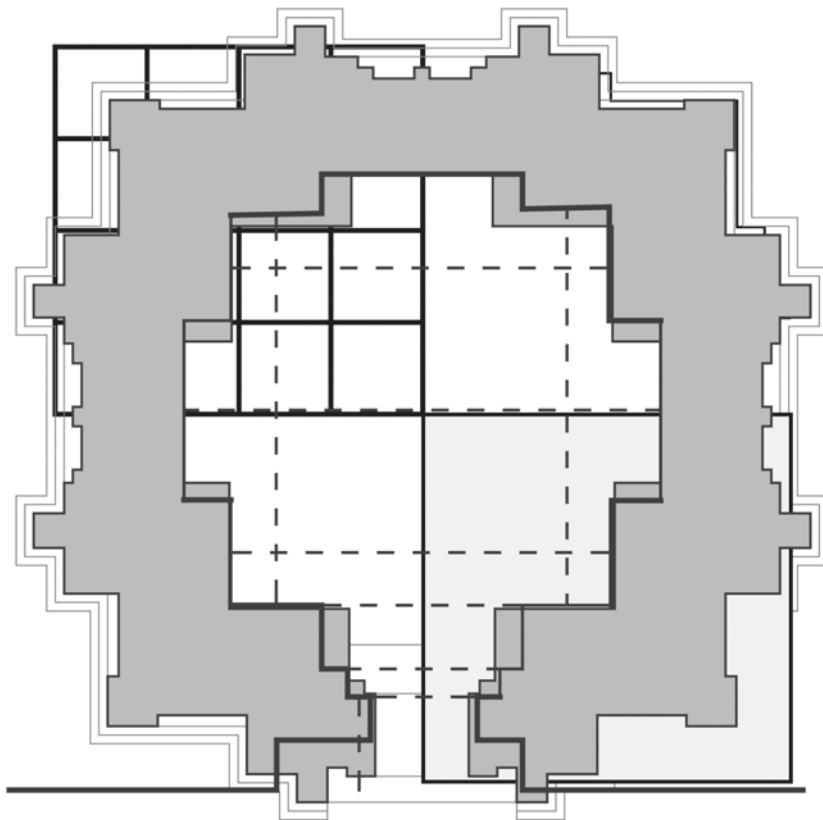


10th century AD
Temple, Roda Gujarat







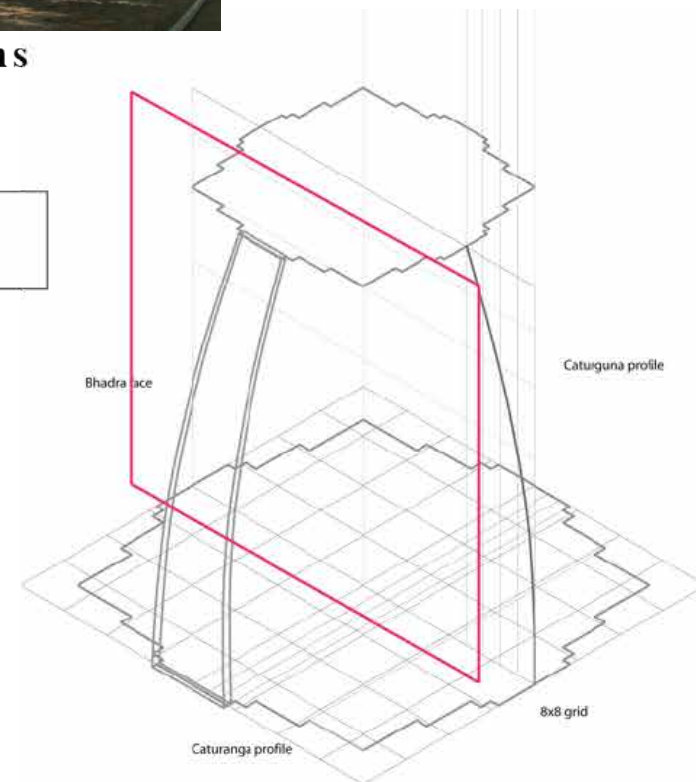
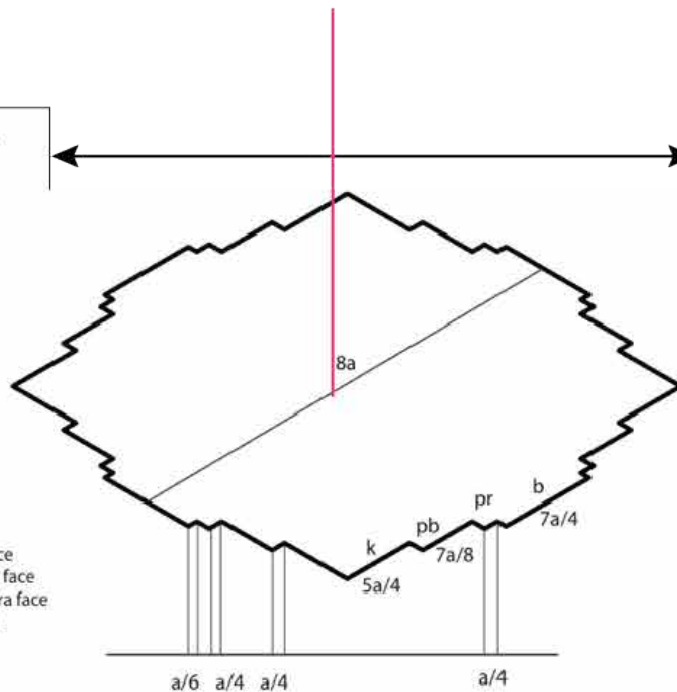


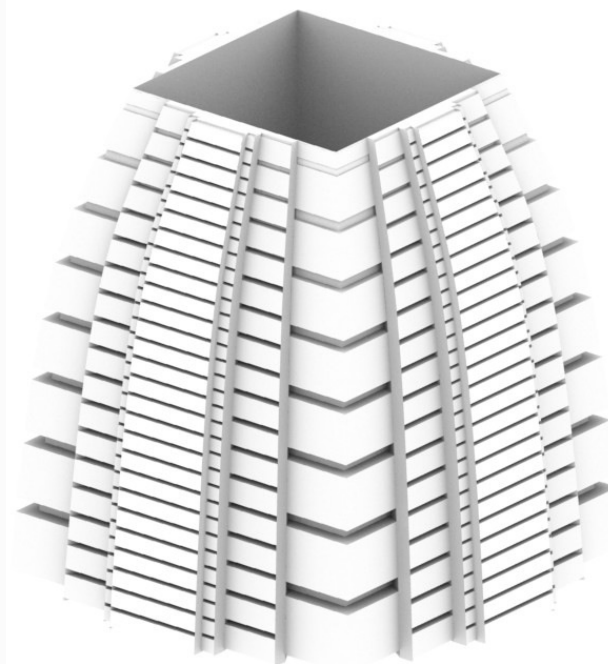
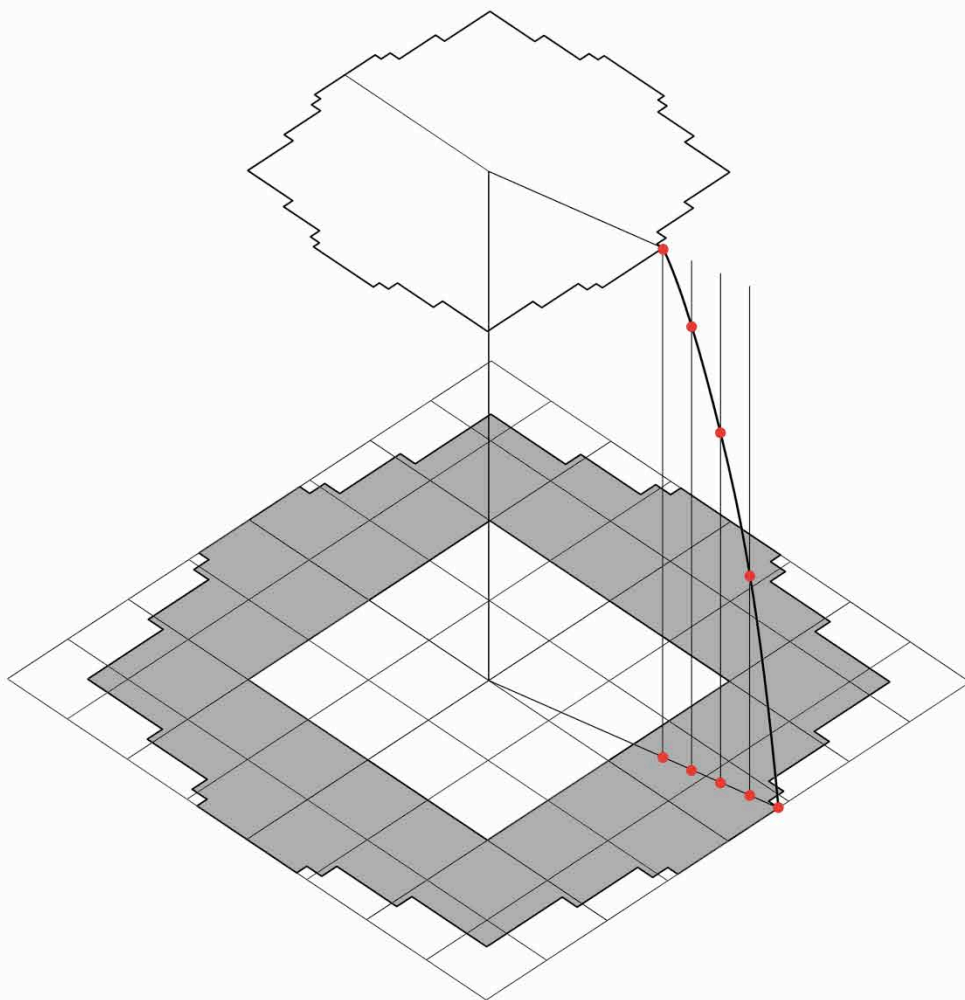


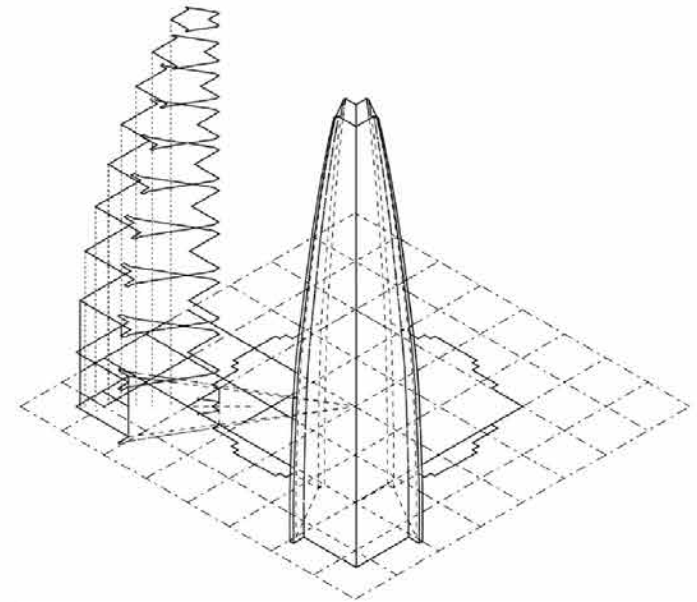
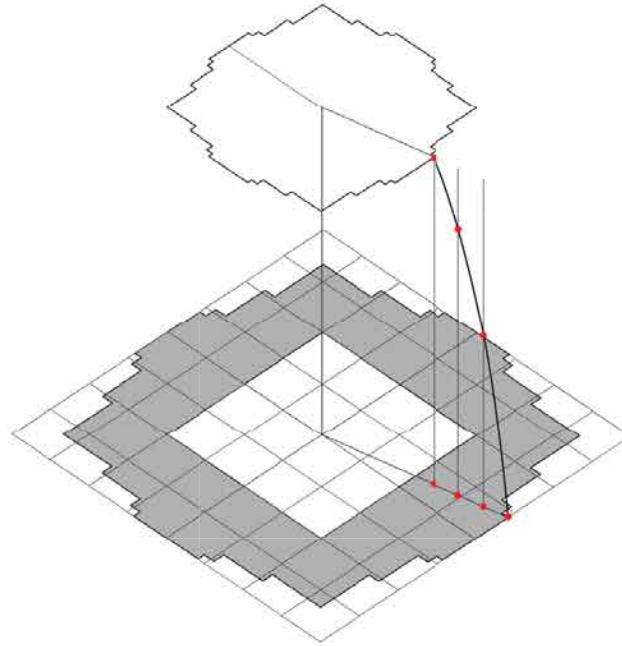
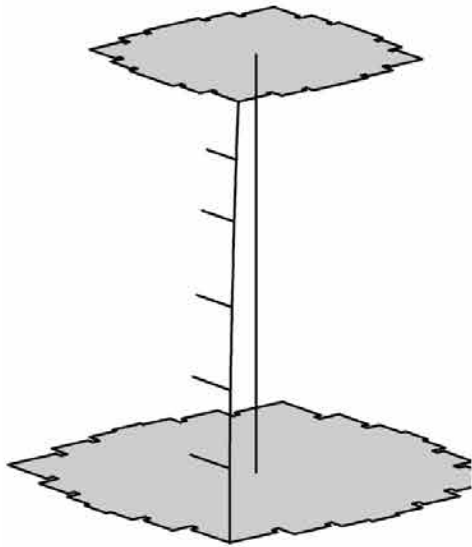
Planar Oriented Dissections

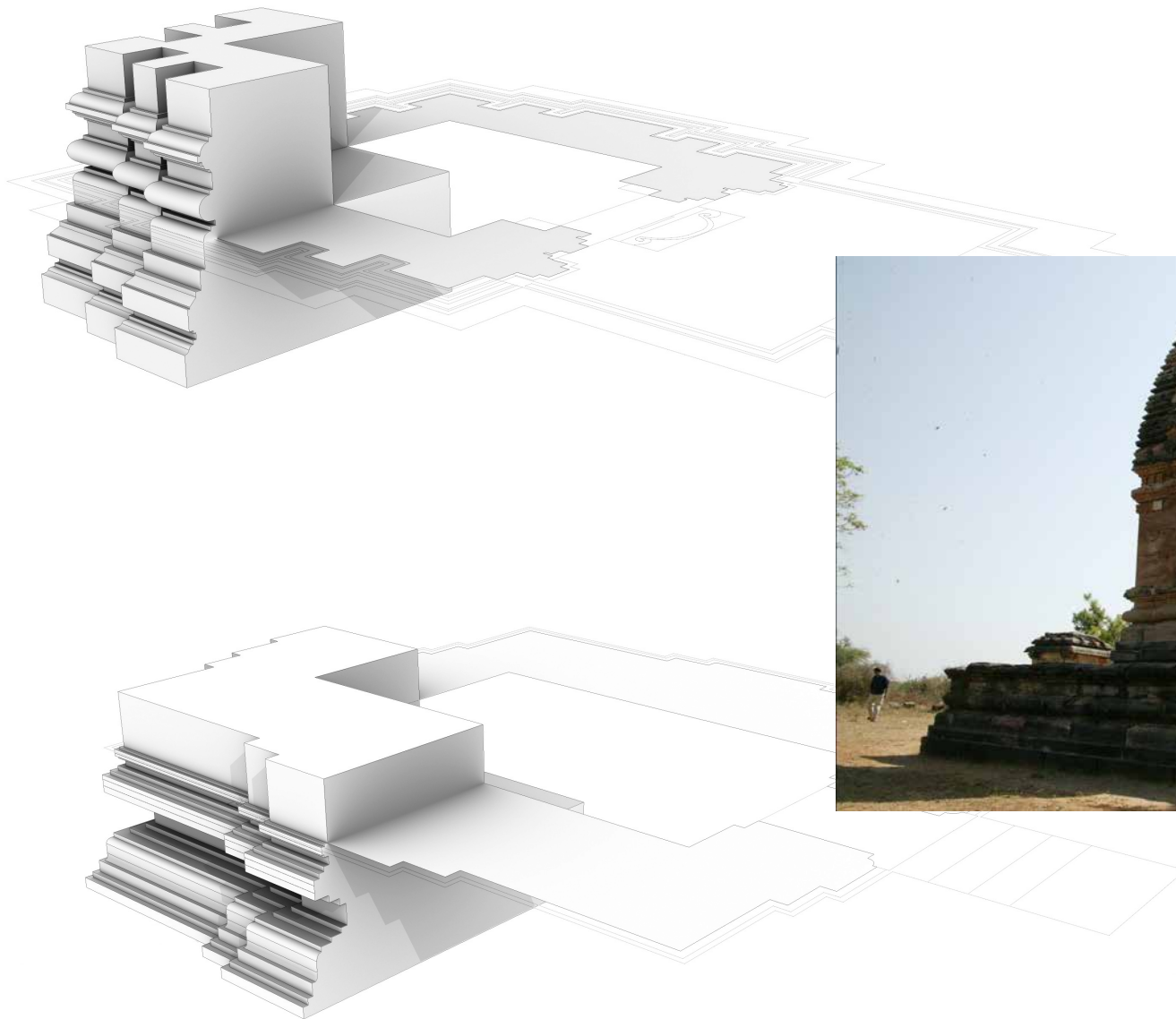
HORIZONTAL
DISSECTIONS

2D VERTICAL
DISSECTIONS

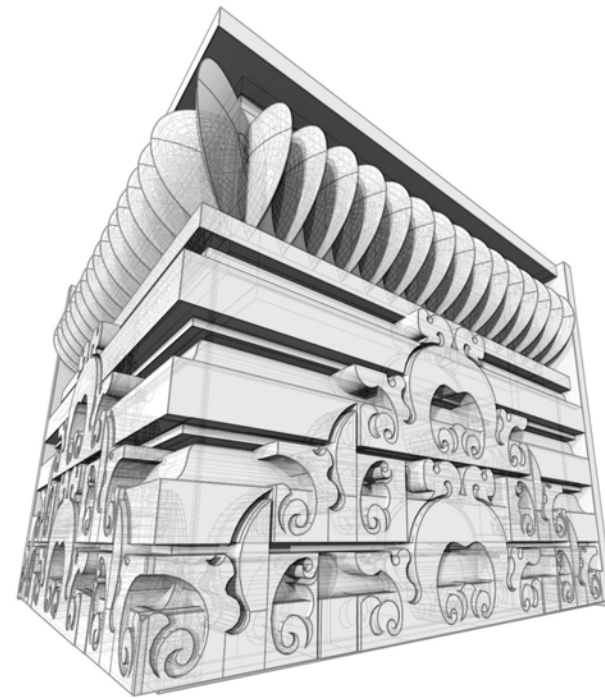
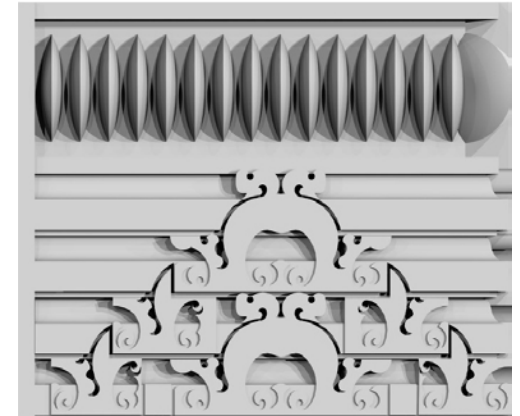
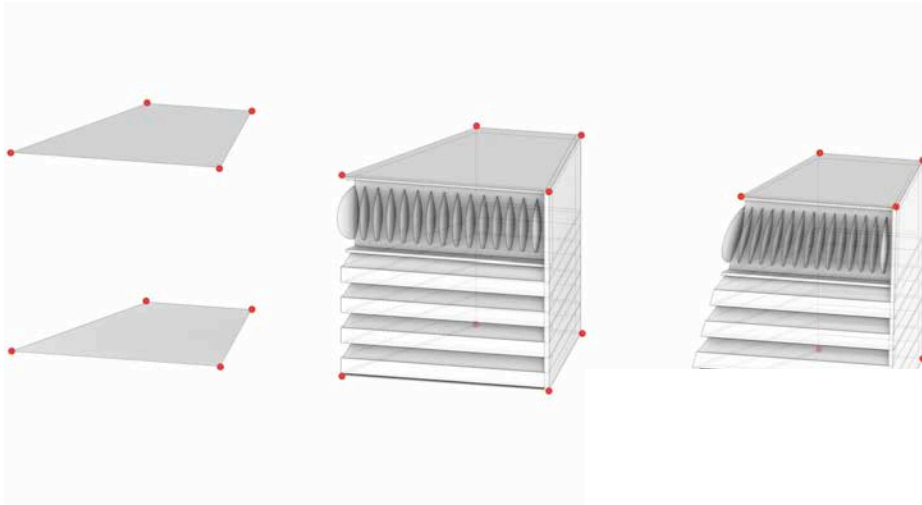




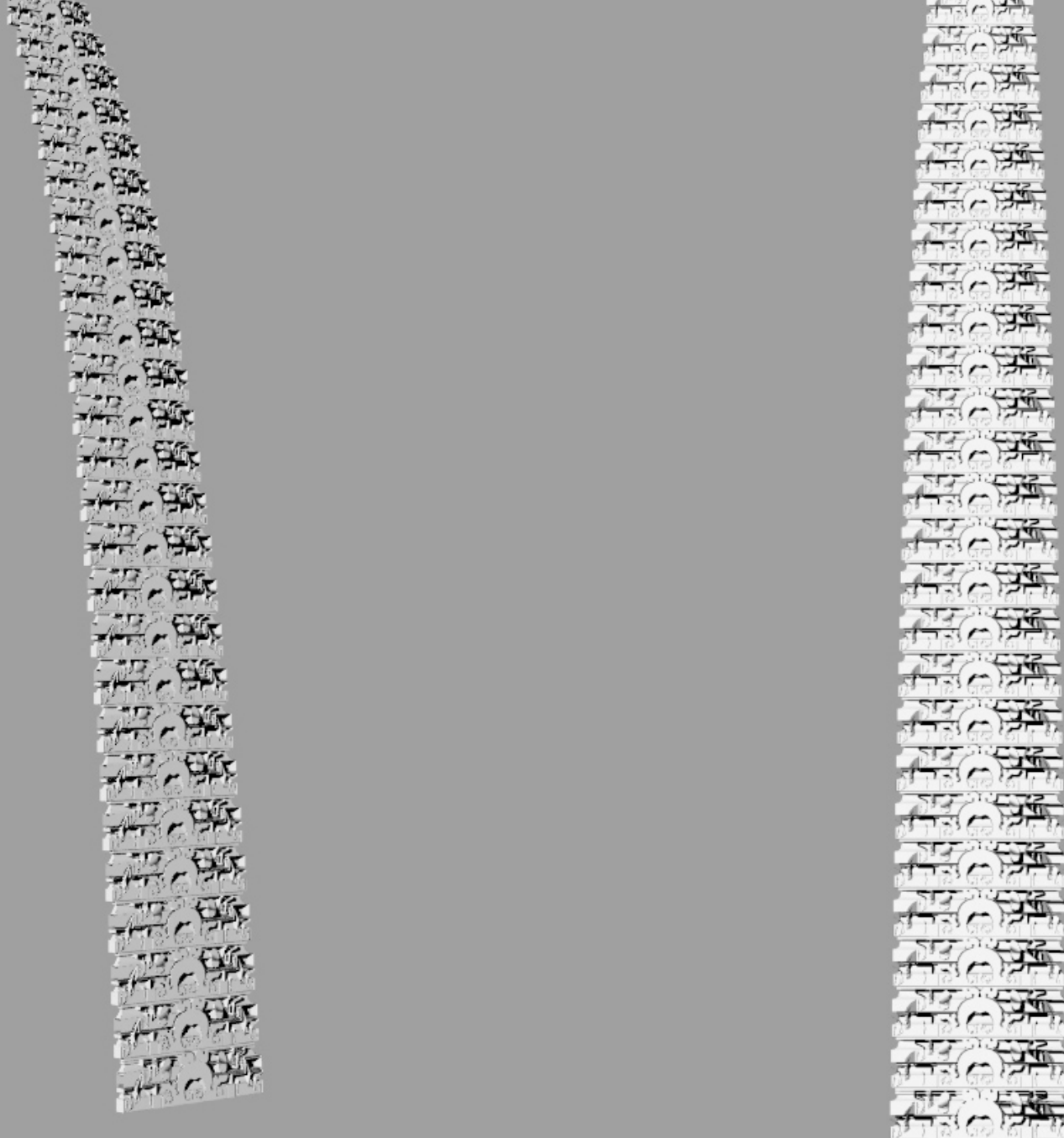




Mouldings



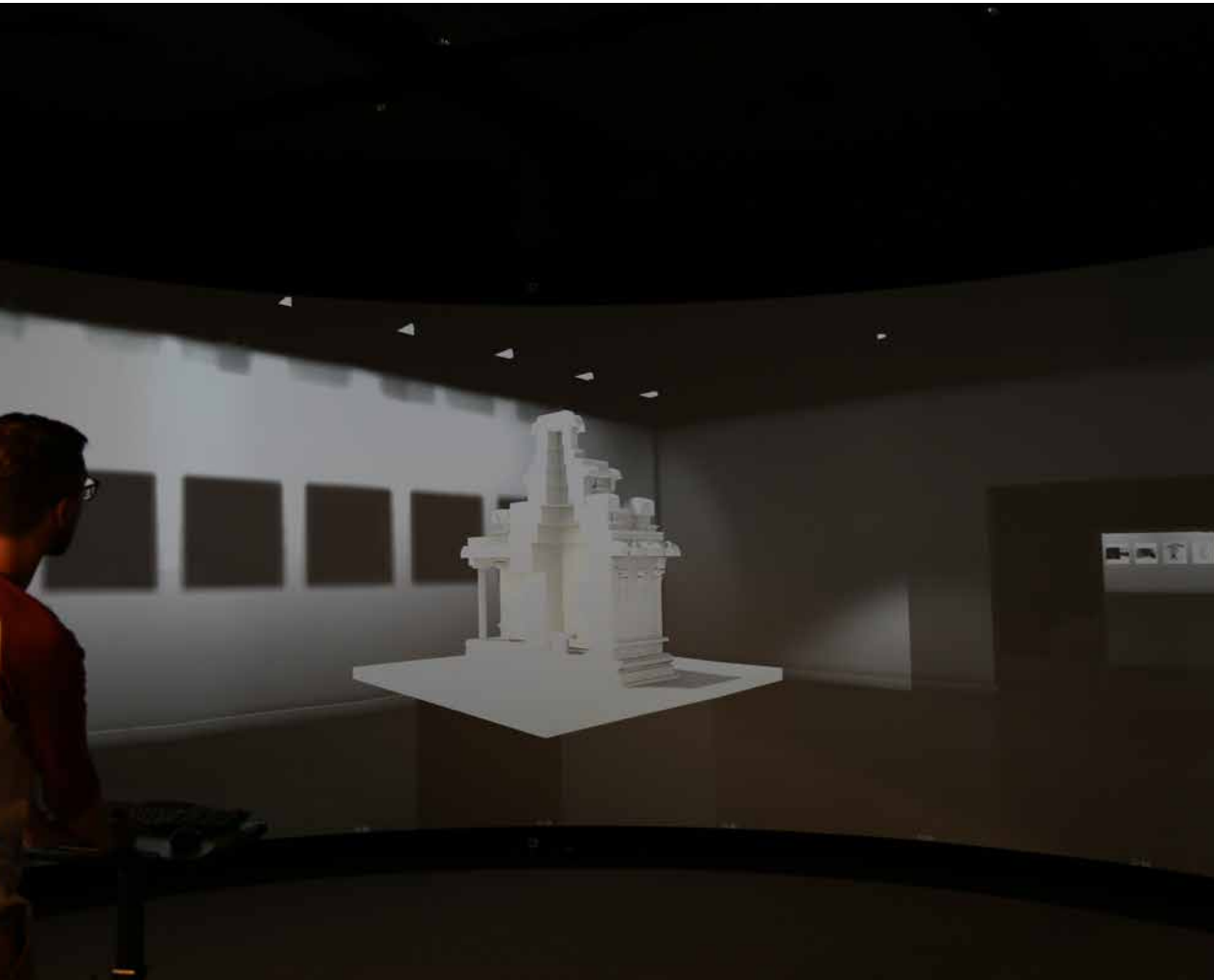
Fragments



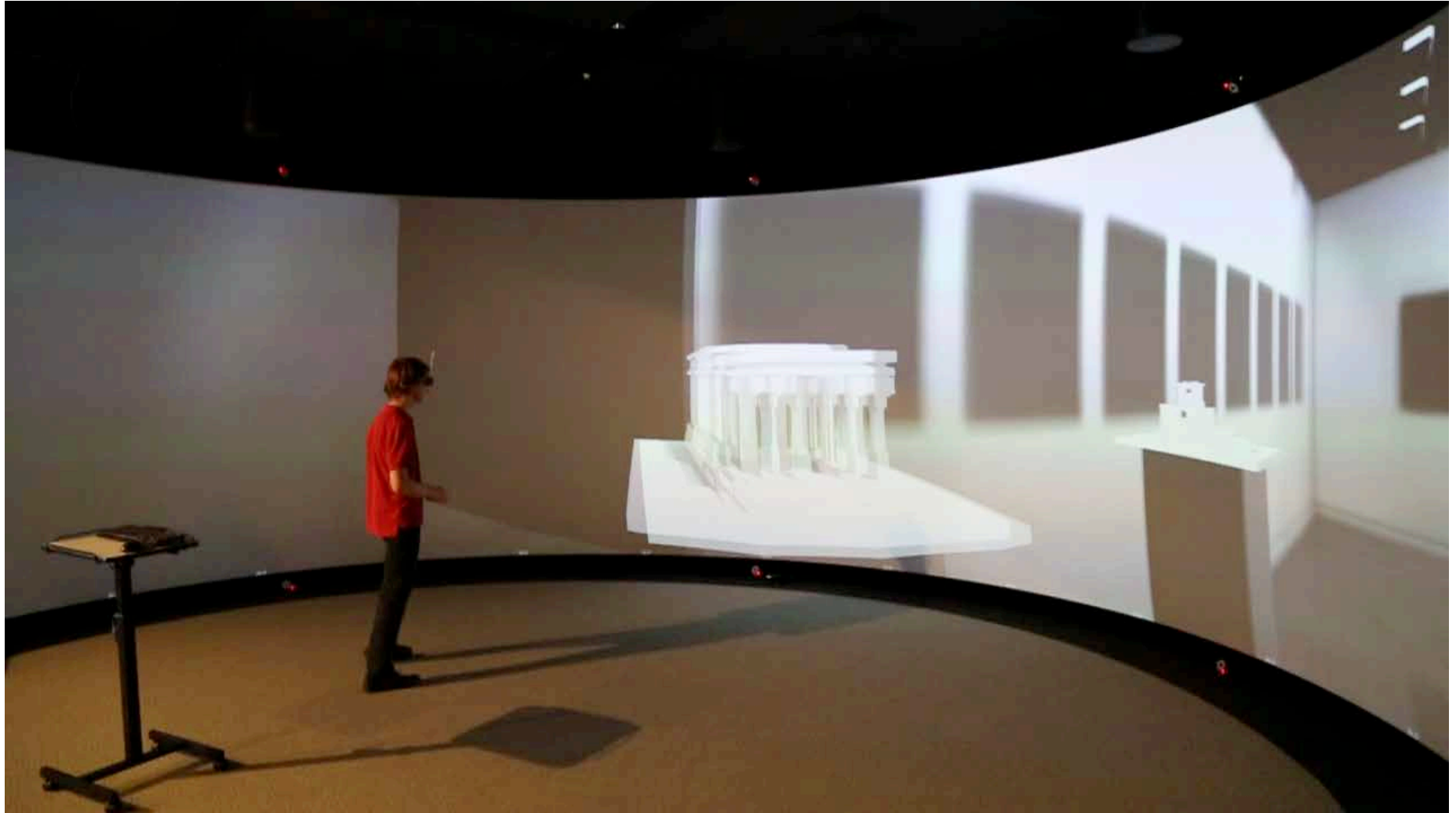
Immersive Stereoscopic Environments

visualisation, simulation, communication and sharing of digital datasets.

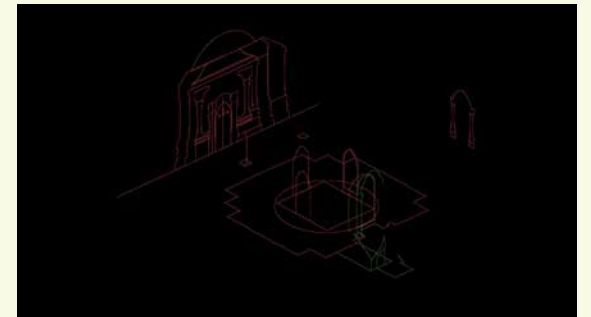
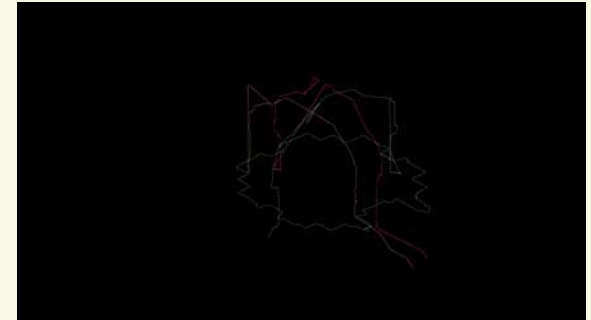
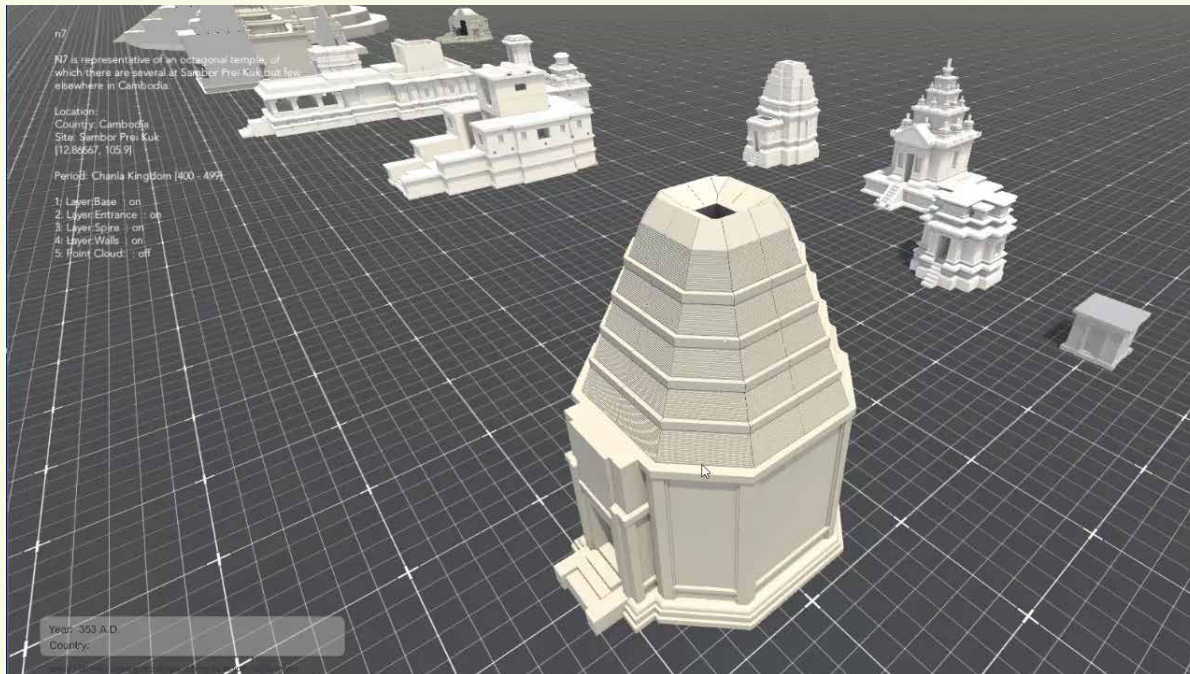




interaction with virtual collections.
Immersive Environments

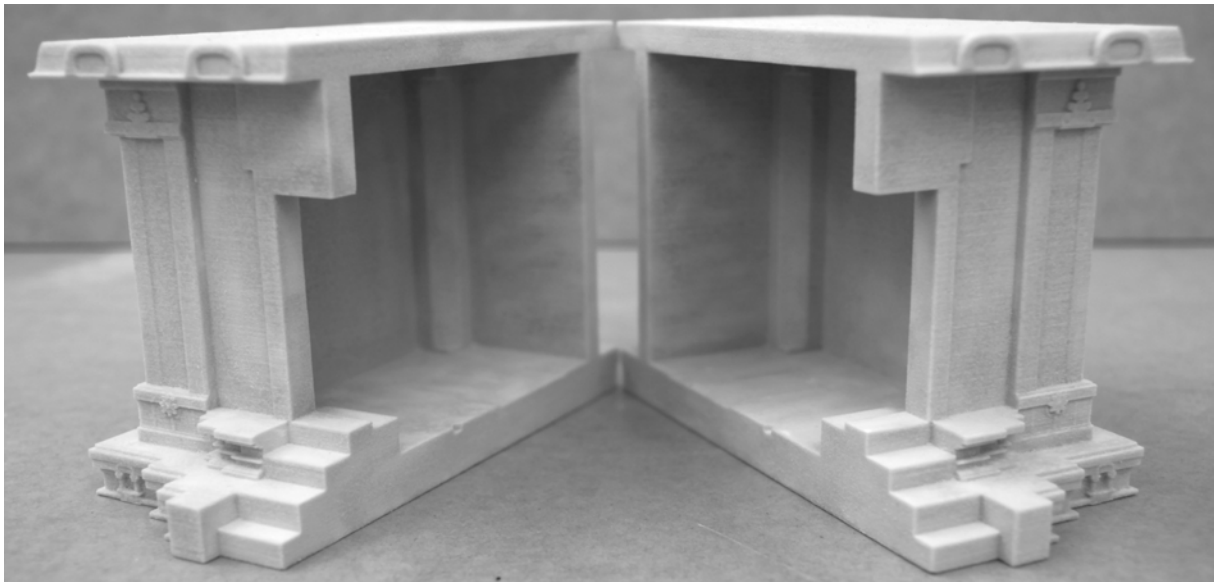
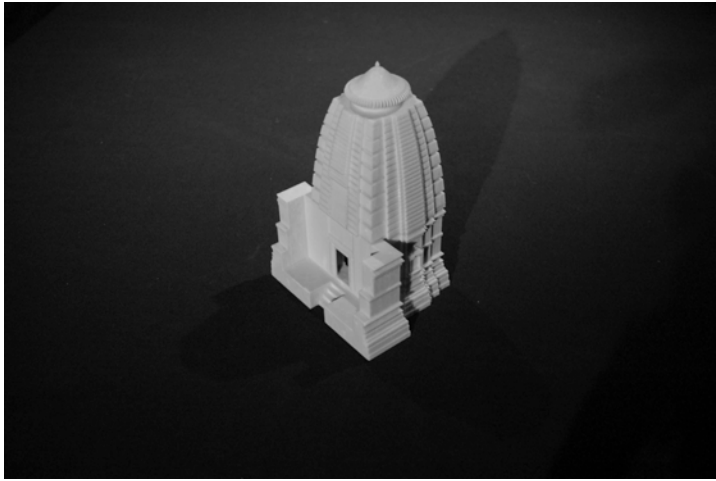


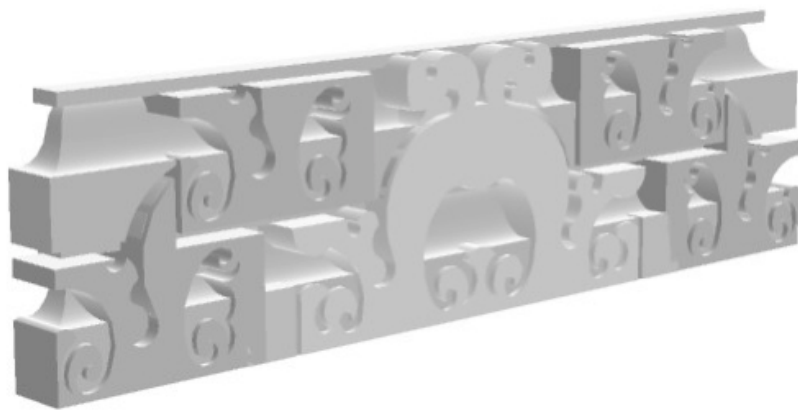
interaction with virtual collections.
Immersive Environments



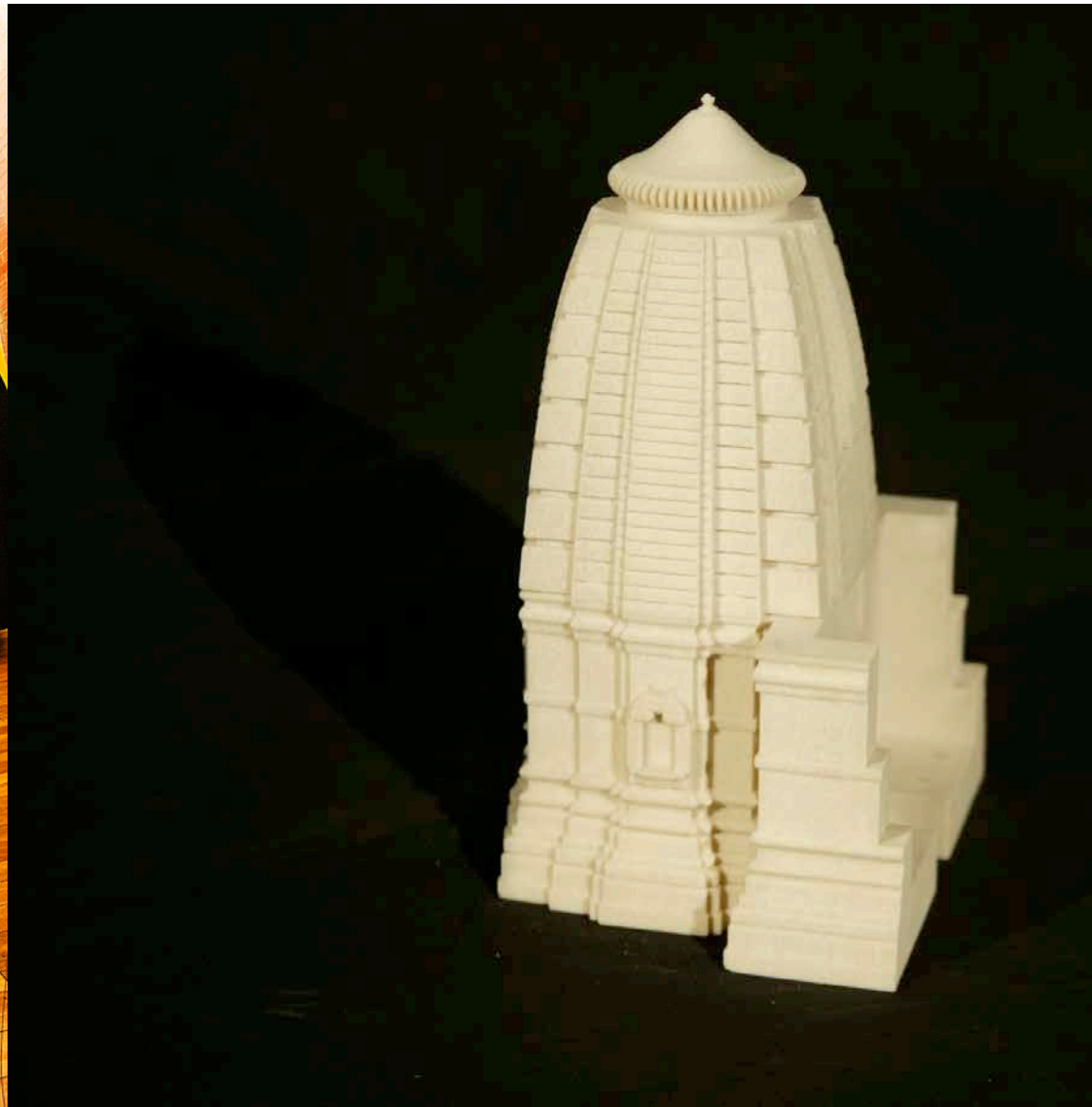
- Development of tools and interfaces
- Multiple datasets and slicing analysis

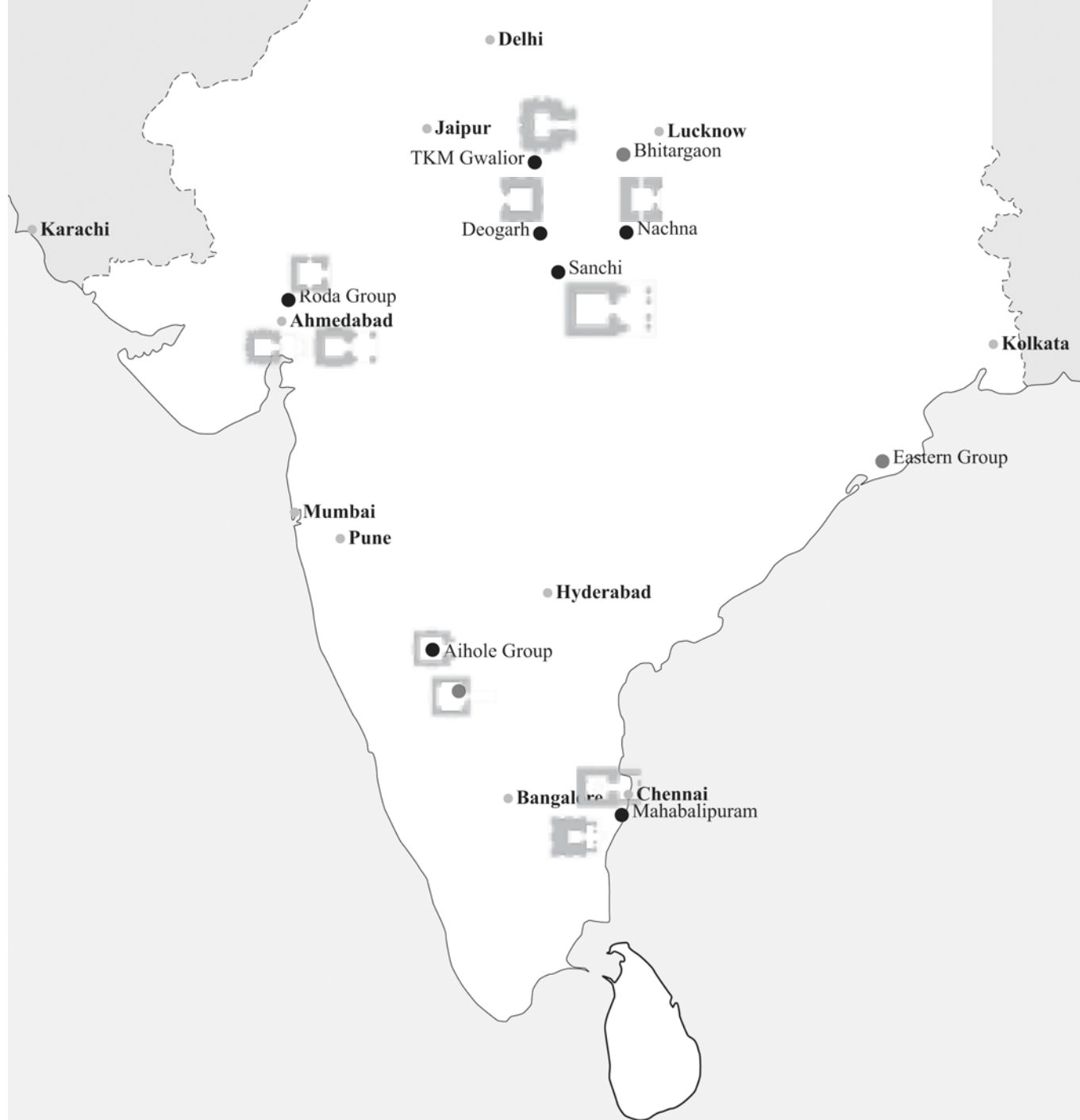
Physical models

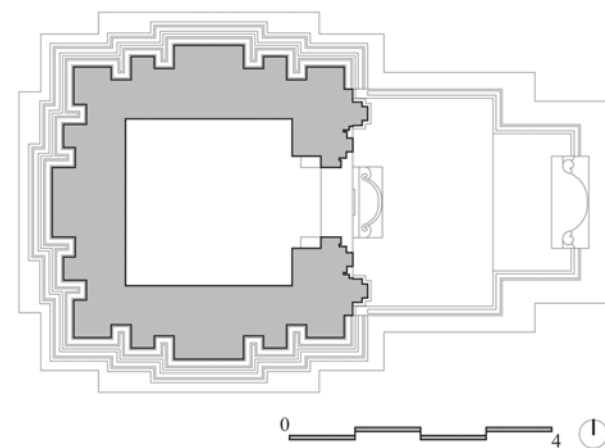
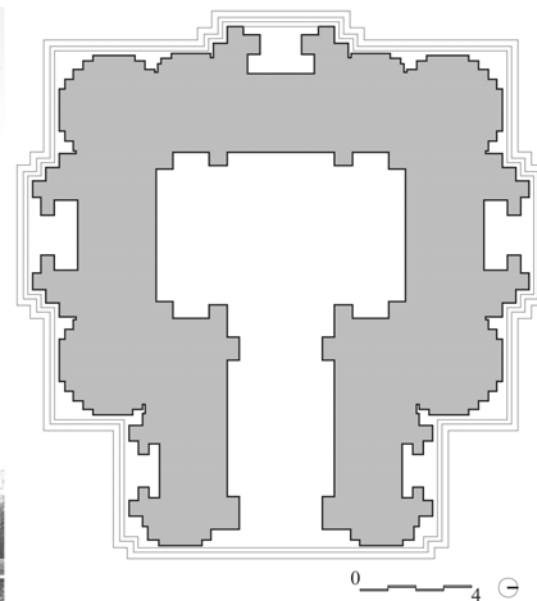
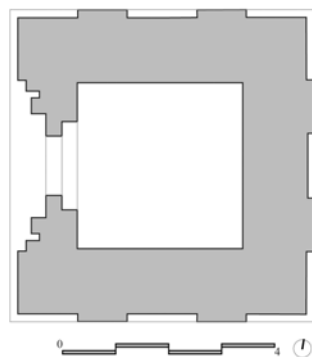
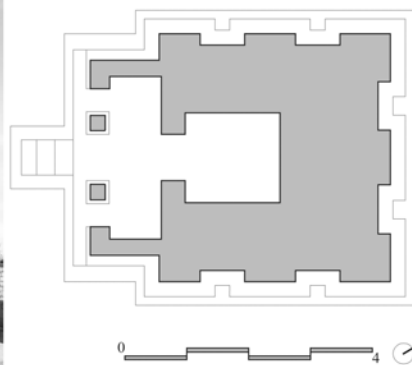


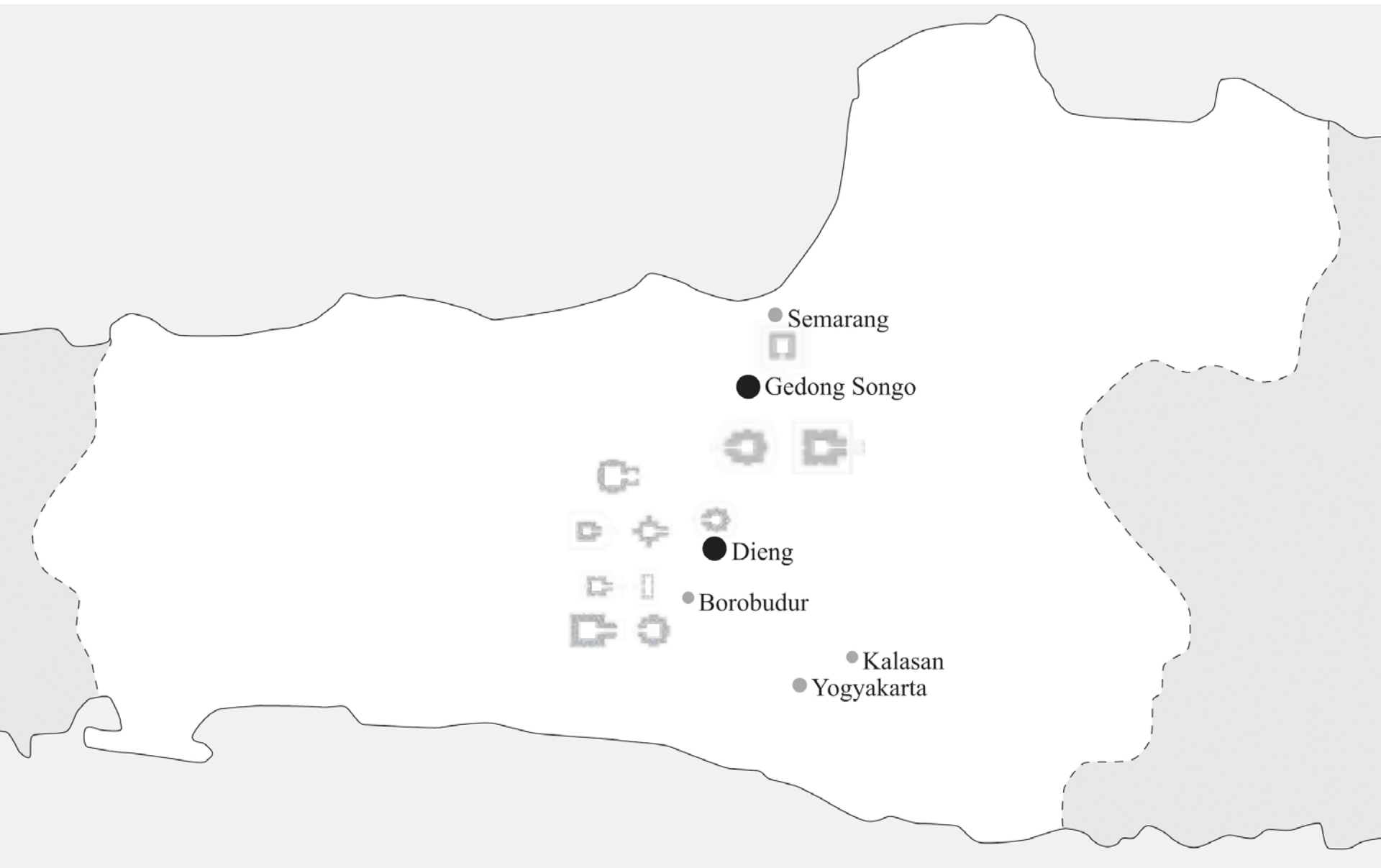


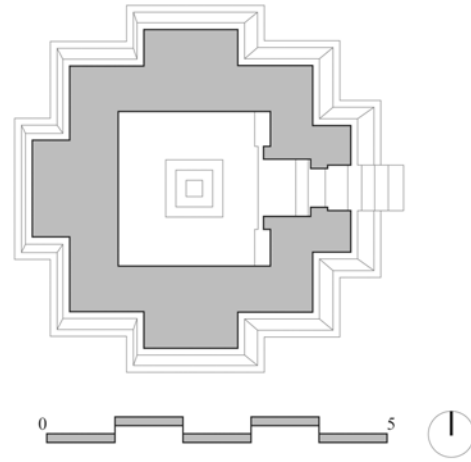
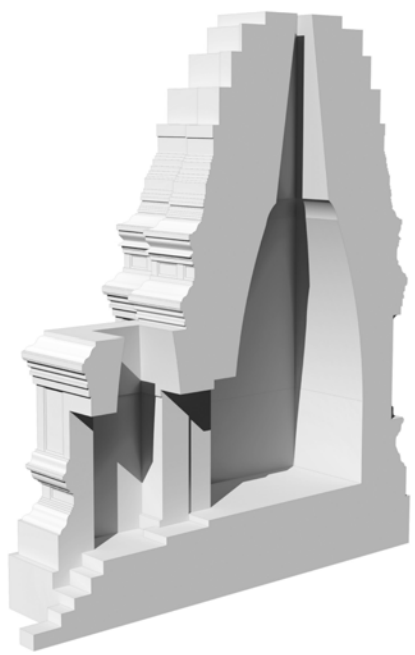
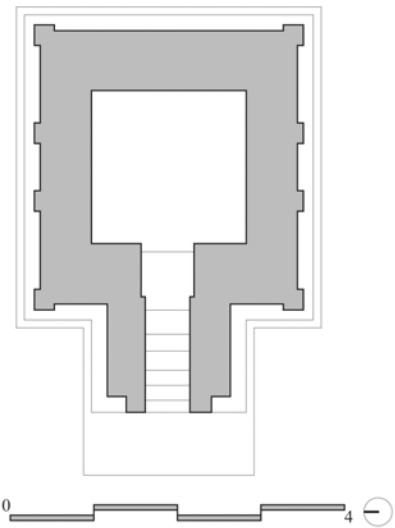
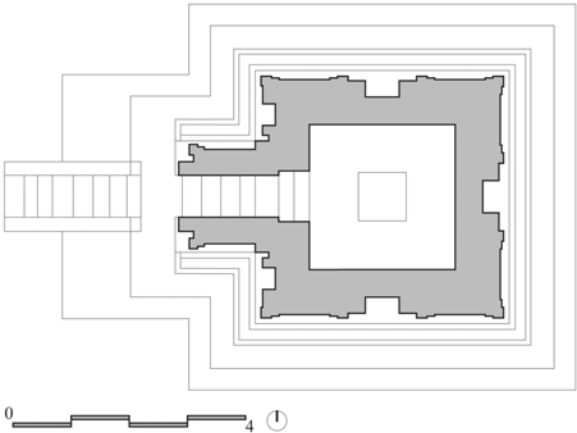
Physical prototypes













Pr. O'Paong
Pr. Damrei Krap Pr. Thma Dap

Angkor Wat
Siem Reap

Battambang

Tonle Sap

Sambor Prei Kuk

Kampong Thom

Stueng Traeng

Kracheh

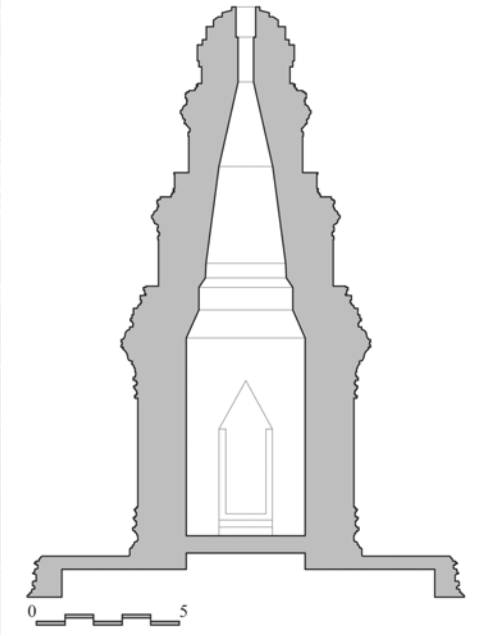
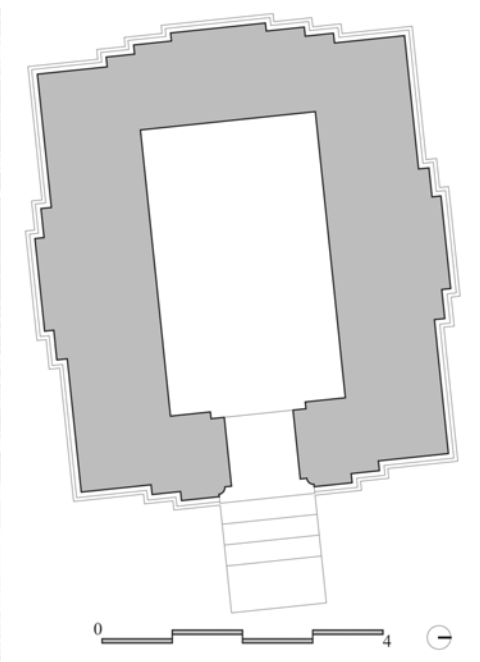
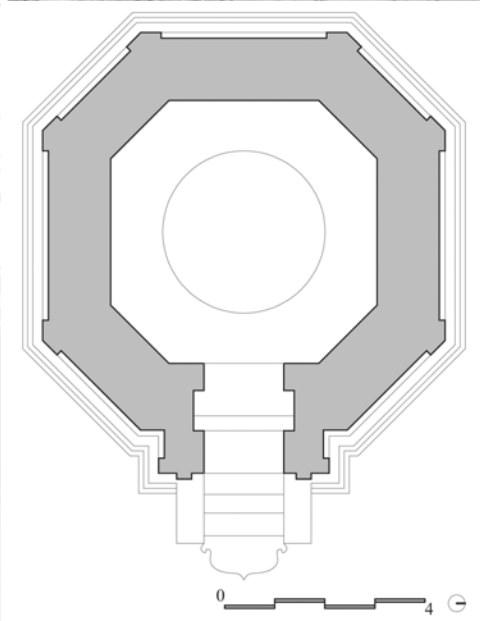
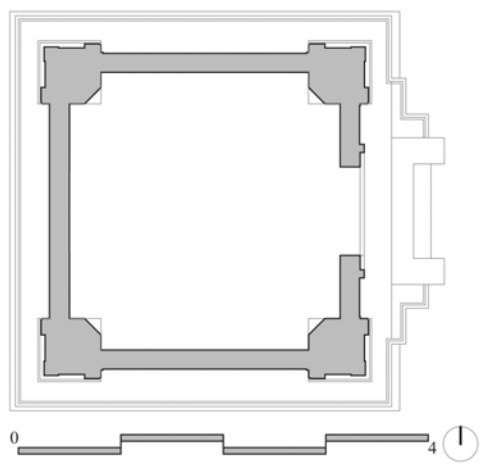
Hanchey

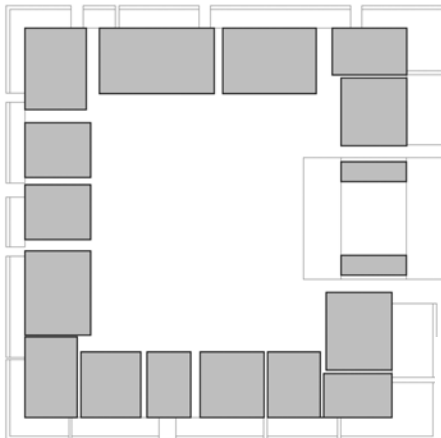
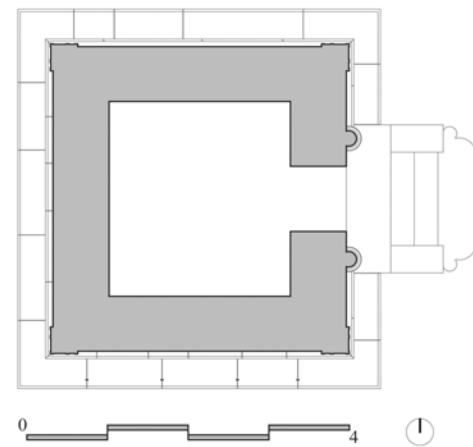
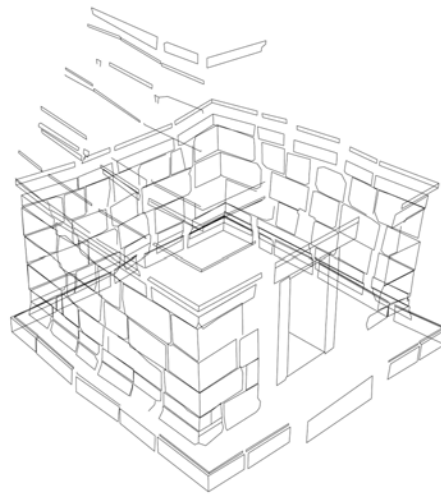
Kampong Cham

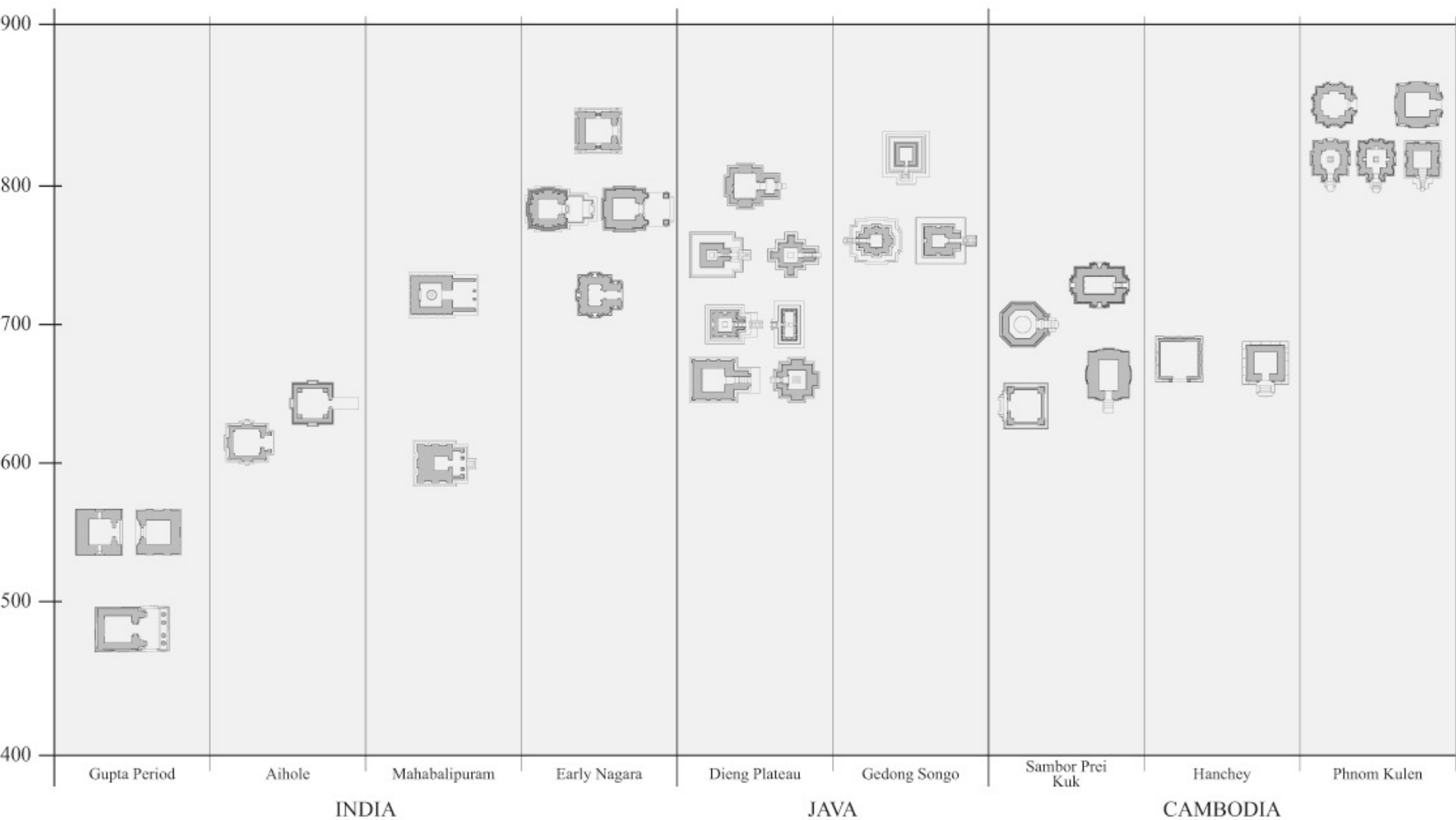
Phnom Penh

Asram Maharosei
Takeo

Sihanoukville





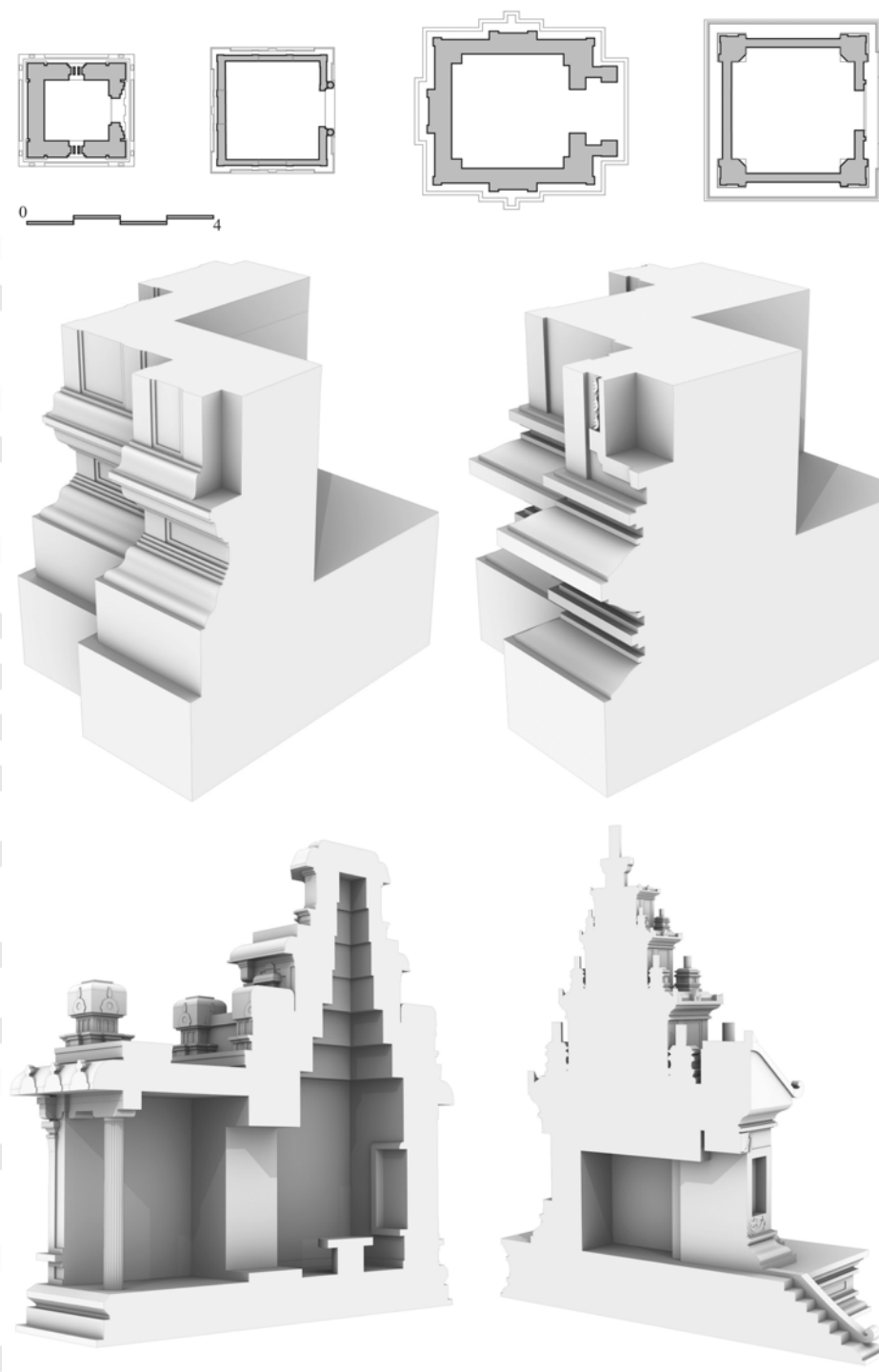


34 temple datasets

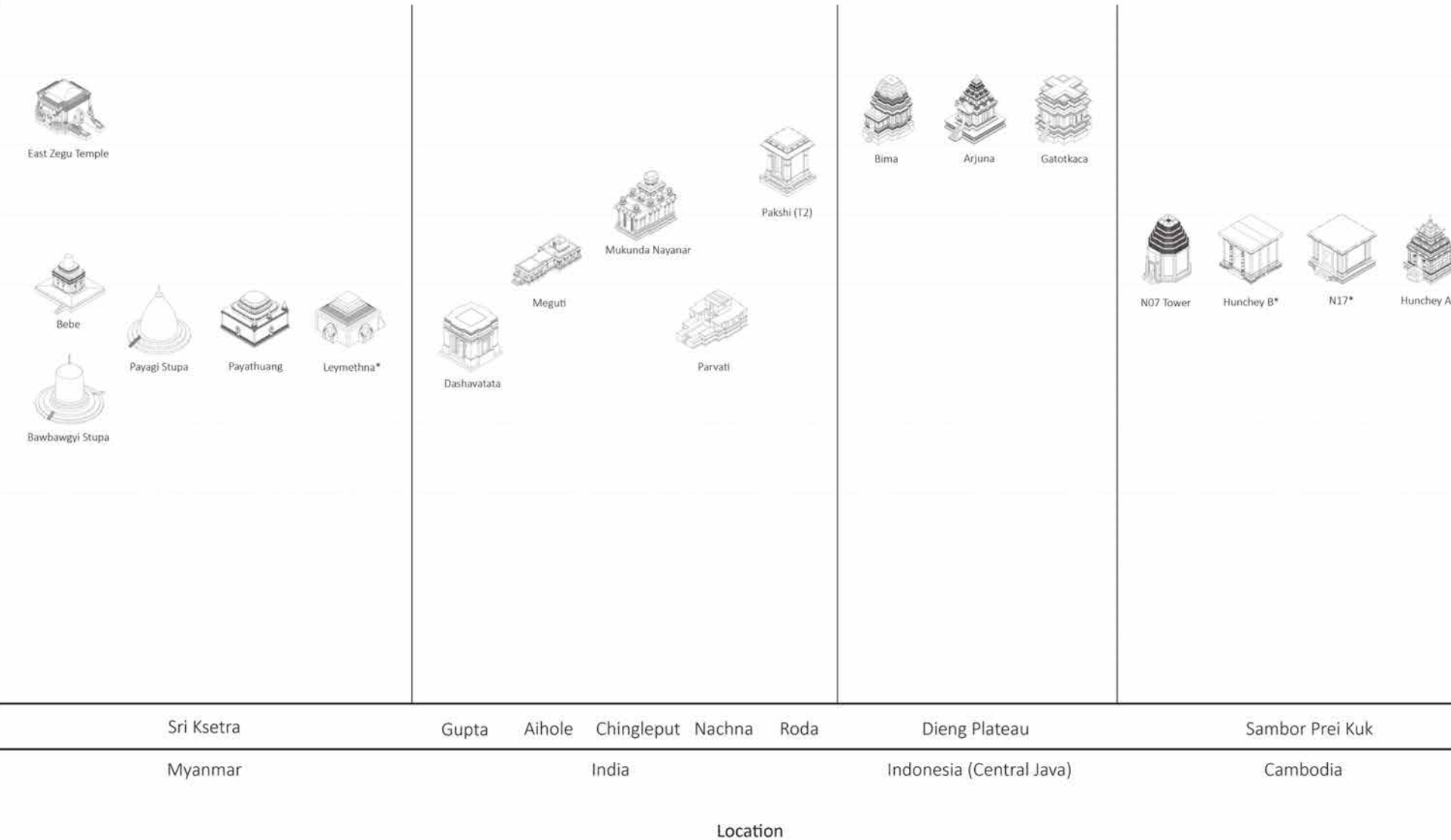
Digital Curation

the selection, preservation, maintenance, collection and archiving of digital assets.

Temple Comparisons

[illegible]

Temples in visualisation.



Notes:

Age unconfirmed

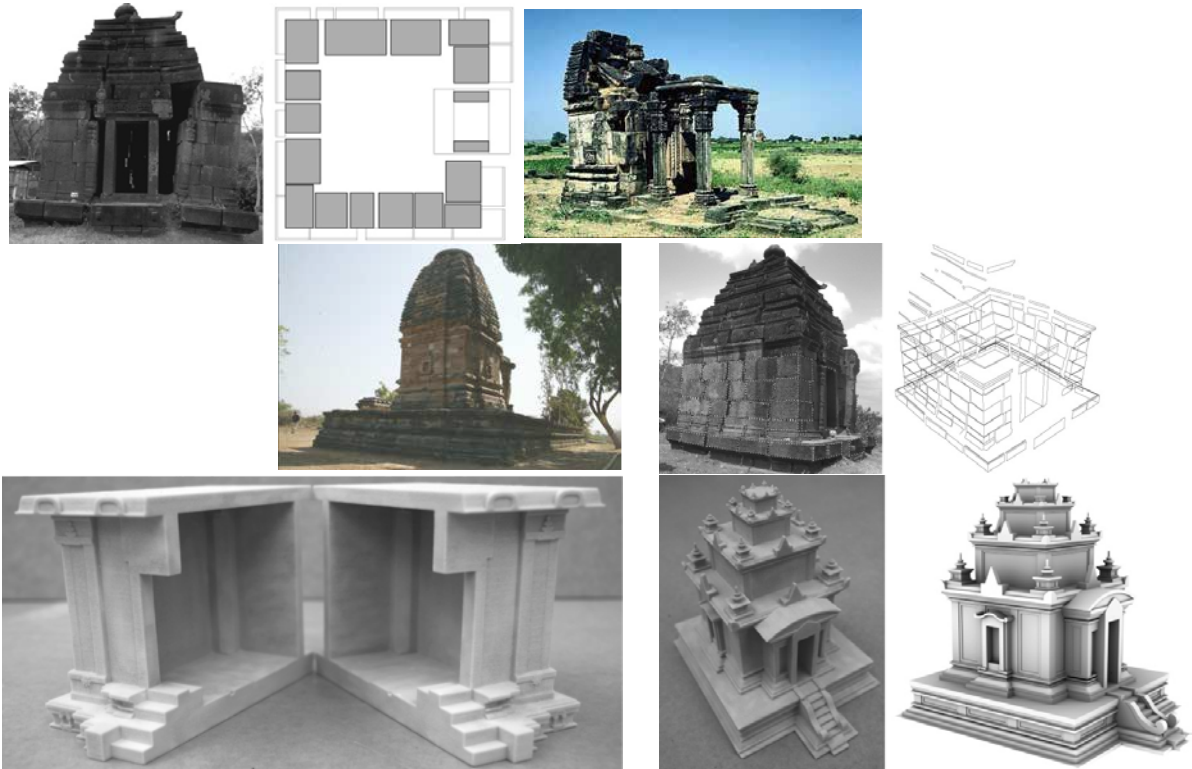
* Temples shown are not to scale

Further Work

- **Rescuing** the knowledge about the unique character of Temple Architecture (mathematics, geometry, construction)
- **Recording and archiving** the role of temple architecture in the cultural and urban heritage of Asia
- **Unveiling** the structure of early connections by **analysing** with digital architectural preservation techniques
- **Capacity building** in South and Southeast on architecture and urban conservation and **technology transfer** from research institutes and bodies to local experts; and
- **Raising awareness** of cultural, social, spatial and urban heritage in the current context of urban development in SE Asia

11 December, 2019

NDLI-UNESCO International Symposium on Knowledge Engineering
for Digital Library Design, IIT Delhi



Curtin University